

**PART 2 - ARMENIA: INCOME,
EXPENDITURES AND BASIC FOOD
CONSUMPTION OF HOUSEHOLDS**

CHAPTER 7. HOUSEHOLD INCOME, EXPENDITURE AND BASIC FOOD CONSUMPTION¹

This chapter presents changes in household incomes, expenditures, and basic food consumption over the period of 2004-2011. The analysis is based on the results of the Integrated Living Conditions Surveys of the respective years. Source of information is the diary of current expenditures, consumption and incomes. In this chapter all indicators of household living standards are estimated per household member.

7.1. Households Income

Household income is one of the key indicators to assess the living standards of population. Household income comprises monetary and non-monetary income.

Monetary household income includes the funds received by household members as remuneration for work (excluded income tax and other wage-deductible mandatory social contributions), funds received from self-employment or entrepreneurial activities, social transfers (pensions, monetary social assistance, including unemployment, family, child birth and care benefits and others), private remittances, property rental income, interests, dividends, equity gains, revenues from the sale of shares and other securities, real estate and house utensils, livestock, and own production food, as well as funds received as assistance from relatives and third persons, or other monetary income.

Total household income comprises all sources of monetary income, as well as non-monetary income such as own produced food consumed (used) by the household, and non-food products and services received free of charge from relatives or third persons, all expressed in monetary terms. The structure of nominal monetary income per household member in 2008-2011 is presented in Table 7.1.

Table 7.1 Armenia: Types of Household Nominal Income, 2008-2011

	Average monthly income per household member							
	AMD				%			
	2008	2009	2010	2011	2008	2009	2010	2011
1. Monetary income, including:	26866	28038	31553	34206	90.8	91.8	91.6	92.3
• Wage employment	14491	15328	16738	18135	49.0	50.2	48.6	48.9
• Self-employment	2385	1534	2193	2325	8.1	5.0	6.4	6.3
• Sale of agricultural products and cattle	1771	1667	1181	1731	6.0	5.5	3.4	4.7
• Estate (renting, interests, equity gains)	35	25	30	141	0.1	0.1	0.1	0.4
• Public pensions and benefits	4870	5615	5888	6502	16.5	18.4	17.1	17.5
• Remittances, of which:	2692	2669	3927	4127	9.1	8.7	11.4	11.1
- from relatives residing in Armenia	449	354	494	554	1.5	1.2	1.4	1.5
- from relatives residing outside Armenia	2243	2315	3431	3571	7.6	7.5	10.0	9.6
• Other income	622	1200	1596	1245	2.0	3.9	4.6	3.4
2. Non-monetary income, including:	2710	2503	2881	2844	9.2	8.2	8.4	7.7
• Consumption of food from private farm	2426	2230	2537	2499	8.2	7.3	7.4	6.7

¹ Source of information is the diary of current expenditures, consumption and incomes.

	Average monthly income per household member							
	AMD				%			
	2008	2009	2010	2011	2008	2009	2010	2011
• Free non-foods and services	284	273	344	345	1.0	0.9	1.0	1.0
Total income	29576	30541	34434	37050	100	100	100	100

Source: *ILCS 2008-2011*

As shown in Table 7.1, the share of monetary income in the total income grew over the period of 2008-2011. The share of income from wage employment and self-employment decreased in urban communities. Examination of household income by urban/ rural distinction highlighted the growing importance of income from wage employment particularly for urban population, where it comprised 59 percent of the total income in 2011. On the other hand, income from wage employment was two times lower, totaling to 27 percent of the total income of rural households. The share of income of rural households from the sale of agricultural products and livestock decreased dramatically over the period of 2008- 2011 (from 17.6 to 14.8 percent). The share of non-monetary income, particularly in the form of own produced food, was of greater importance for rural than for urban households. In 2011, the share of non-monetary income comprised 18 percent of the total income of rural households and only 3 percent of that of urban households (Table 7.2). It should be mentioned that the share of private remittances in total household income grew for both urban and rural households (from 9.9 percent in 2008 to 11.1 percent in 2011 and from 7.3 percent in 2008 to 11.1 percent in 2011 respectively).

Table 7.2 Armenia: Sources of Household Nominal Income by Urban/Rural Communities, 2008 and 2011 (Average Monthly Income per Household Member)

	Urban communities				Rural communities			
	AMD		%		AMD		%	
	2008	2011	2008	2011	2008	2011	2008	2011.
1. Monetary income, including:	30174	38451	96.8	96.9	20754	26384	78.0	81.9
• Wage employment	18068	23246	57.9	58.6	7881	8717	29.6	27.0
• Self-employment	3084	2901	9.9	7.3	1092	1264	4.1	3.9
• Sale of agricultural products and cattle	201	77	0.6	0.2	4670	4778	17.6	14.8
• Estate (renting, interests, equity gains)	49	216	0.2	0.5	10	3	0.0	0.0
• Public pensions and benefits	5006	6650	16.1	16.8	4615	6229	17.3	19.3
• Remittances, of which:	3094	4422	9.9	11.1	1950	3584	7.3	11.1
- from relatives residing in Armenia	587	769	1.9	1.9	195	159	0.7	0.5
- from relatives residing outside Armenia	2507	3650	8.0	9.2	1755	3425	6.6	10.6
• Other income	672	939	2.2	2.4	536	1809	2.1	5.8
2. Non-monetary income, including:	1010	1219	3.2	3.1	5852	5837	22.0	18.1
• Consumption of food from private farm	686	773	2.2	2.0	5642	5678	21.2	17.6
• Free non-foods and services	324	446	1.0	1.1	210	159	0.8	0.5
Total income	31184	39670	100	100	26606	32221	100	100

Source: *ILCS 2008-2011*

Table 7.3 below presents the structure of monetary income by income deciles. The study of household monetary income depicts the distribution of income sources and its dynamics over time. Over 2004-2011, the difference between the tenth and the first decile groups in terms of income from wage employment

PART II

decreased (from 98 times in 2004 to 81 times in 2011). The difference between the tenth and the first decile groups in terms of income received from agricultural products decreased from 7.7 times in 2004 to 3.9 times in 2011. Meanwhile, this difference (between tenth and first decile) in terms of the income from transfers decreased as well, from 57 times in 2004 to 57 times in 2011 (Table 7.3; Figure 7.1).

Table 7.3 Armenia: Flows of Household Nominal Monetary Income by Decile Groups, 2004-2011* (Average Monthly Income per Household Member)

(AMD)

2004	Decile groups by monetary income									
	I	II	III	IV	V	VI	VII	VIII	IX	X
Average monthly monetary income per household member, including:	2260	4395	6189	8017	9869	11903	14337	17882	23793	47061
Employment income	294	959	2029	3384	4929	6323	8105	11498	15944	28881
Pensions, benefits, scholarships	1032	1872	2175	2094	2357	2315	2190	2059	1921	1771
Income from sales of agricultural products	495	810	909	1282	1213	1683	1775	1867	2311	3823
Remittances, of which:	157	188	444	592	728	1000	1582	1857	2840	8933
- from relatives residing in Armenia	72	83	153	193	162	335	332	314	542	1571
- from relatives residing outside Armenia	84	98	284	378	559	656	1229	1539	2273	7331
Other income	282	566	632	665	642	582	685	601	777	3653

2005	Decile groups by monetary income									
	I	II	III	IV	V	VI	VII	VIII	IX	X
Average monthly monetary income per household member, including:	2580	5088	7246	9383	11617	14058	16848	20875	27319	45531
Employment income	162	1052	2897	4676	5968	8477	10237	13807	19422	30744
Pensions, benefits, scholarships	1112	2323	2297	2375	3122	2648	2727	2593	1874	1605
Income from sales of agricultural products	704	707	846	909	1115	1321	1841	1784	2538	4525
Remittances, of which:	173	354	481	720	834	1008	1516	2077	2889	6864
- from relatives residing in Armenia	49	153	133	237	203	275	284	525	621	821
- from relatives residing outside Armenia	124	199	341	467	629	731	1230	1549	2264	6043
Other income	429	652	725	703	578	604	527	614	596	1793

2006	Decile groups by monetary income									
	I	II	III	IV	V	VI	VII	VIII	IX	X
Average monthly monetary income per household member, including:	3717	6929	9262	11569	13886	16399	19452	23215	29232	51707
Employment income	602	2332	4296	5754	8061	9006	12423	15272	20777	36163
Pensions, benefits, scholarships	1698	2687	2911	3100	2808	3258	2664	2505	2006	2083
Income from sales of agricultural products	685	828	863	1280	1206	2035	2002	2355	2475	3424
Remittances, of which:	215	417	469	652	886	1059	1249	1995	2905	7219
- from relatives residing in Armenia	62	91	94	87	157	175	293	456	736	970
- from relatives residing outside Armenia	153	322	361	558	718	871	950	1533	2145	6206
Other income	517	665	723	783	925	1041	1114	1088	1069	2818

PART II

2007	Decile groups by monetary income									
	I	II	III	IV	V	VI	VII	VIII	IX	X
Average monthly monetary income per household member, including:	4291	8201	11030	13714	16658	19636	23230	27886	35539	64609
Employment income	643	2707	4894	7714	9434	12195	15643	19285	26189	47808
Pensions, benefits, scholarships	2061	2925	3079	3262	3751	3685	3475	2955	2773	2985
Income from sales of agricultural products	514	1183	1650	1400	1545	1608	1305	2095	1774	3275
Remittances, of which:	295	505	605	760	1302	1627	2035	2941	4298	9581
- from relatives residing in Armenia	76	192	94	164	187	255	581	501	678	1236
- from relatives residing outside Armenia	218	313	506	595	1110	1363	1424	2436	3617	8345
Other income	778	881	802	578	626	521	772	610	505	960

2008	Decile groups by monetary income									
	I	II	III	IV	V	VI	VII	VIII	IX	X
Average monthly monetary income per household member, including:	5236	10012	13483	16754	20150	23936	28035	33561	42934	76398
Employment income	682	3085	6298	8442	10553	13783	18467	22034	31085	55560
Pensions, benefits, scholarships	2550	4099	4334	4412	4951	5620	5356	6684	4656	6259
Income from sales of agricultural products	787	1663	1631	1959	2093	1597	1412	1491	1706	3474
Remittances, of which:	549	617	790	1368	2020	2138	2355	2884	4765	9662
- from relatives residing in Armenia	162	135	141	198	319	504	388	462	752	1463
- from relatives residing outside Armenia	384	482	649	1171	1701	1634	1965	2421	4013	8198
Other income	668	548	431	572	533	797	445	468	722	1443

2009	Decile groups by monetary income									
	I	II	III	IV	V	VI	VII	VIII	IX	X
Average monthly monetary income per household member, including:	5273	9877	13731	17660	21416	25337	30058	36482	45723	76508
Employment income	448	2465	5724	9460	11741	14966	19002	22770	30766	52328
Pensions, benefits, scholarships	2714	4741	4579	4537	5480	6800	6342	6344	7246	7692
Income from sales of agricultural products	765	878	1429	1213	1405	1387	953	2070	1734	4928
Remittances, of which:	315	489	1051	1133	1775	1442	2927	3614	4518	9584
- from relatives residing in Armenia	98	118	243	249	315	173	421	311	568	1067
- from relatives residing outside Armenia	217	371	807	884	1457	1269	2506	3303	3951	8517
Other income	1031	1304	948	1317	1015	742	834	1684	1459	1976

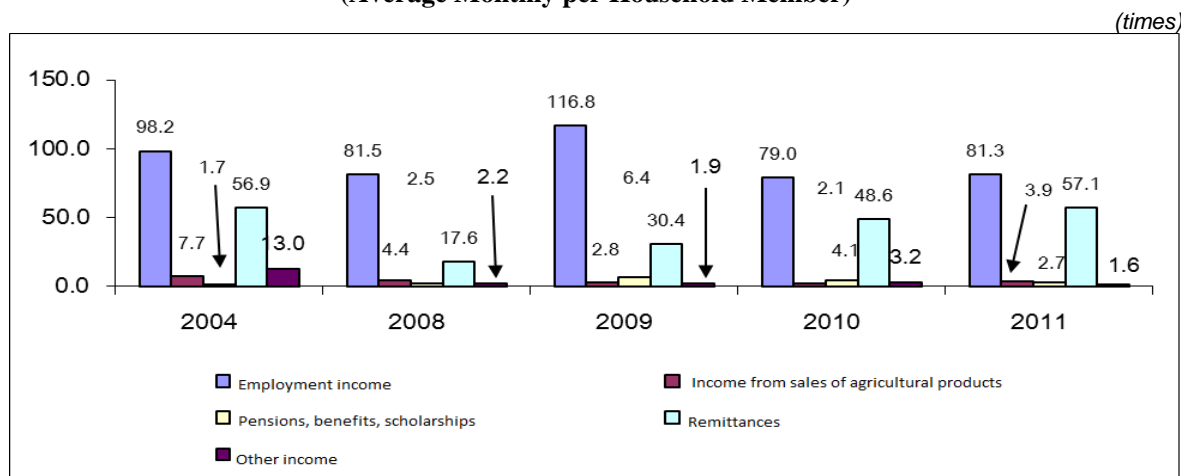
2010	Decile groups by monetary income									
	I	II	III	IV	V	VI	VII	VIII	IX	X
Average monthly monetary income per household member, including:	6489	11207	15440	19407	23166	27216	32225	39133	49671	91965
Employment income	748	2774	6178	10387	13460	15843	19319	25760	35951	59114
Pensions, benefits, scholarships	3380	4979	5281	5181	5264	6830	7617	7104	6250	7090
Income from sales of agricultural products	599	1145	1065	933	842	1186	979	1205	1439	2438
Remittances, of which:	390	714	1087	1465	2346	2080	3026	3998	5221	18963
- from relatives residing in Armenia	136	207	220	205	369	202	578	871	833	1314
- from relatives residing outside Armenia	254	506	866	1260	1967	1874	2448	3127	4379	17649
Other income	1372	1595	1828	1441	1254	1276	1284	1066	810	4360

2011	Decile groups by monetary income									
	I	II	III	IV	V	VI	VII	VIII	IX	X
Average monthly monetary income per household member, including:	6530	12242	16757	21181	25880	30582	36501	43972	55171	95095
Employment income	772	3678	7237	11181	14155	18480	22218	28220	37017	62731
Pensions, benefits, scholarships	3143	5104	5307	5954	6861	7965	7452	8148	6882	8575
Income from sales of agricultural products	1005	1287	1457	1363	1642	1182	1694	1815	2030	3928
Remittances, of which:	311	570	1185	1543	2123	2044	3960	4437	7541	17770
- from relatives residing in Armenia	97	70	259	455	269	232	375	477	1382	1962
- from relatives residing outside Armenia	214	500	921	1077	1854	1812	3585	3959	6159	15808
Other income	1299	1603	1571	1140	1099	911	1177	1352	1701	2091

Source: ILCS 2004-2011

*) Excluding households that did not report their income

Figure 7.1 Armenia: Ratio of Household Monetary Income of the Tenth and the First Decile Groups, by Sources of Income, 2004, 2008-2011* (Average Monthly per Household Member)



Source: ILCS 2004, 2008-2011

*) Excluding households that did not report their income

PART II

State transfers are a key source of income for households in the first decile group (48.1 percent in 2011), while the share of this source of income in the tenth decile group (9.0 percent) is very small (Table 7.4; Figure 7.2). Over the period of 2004-2011, the share of state transfers grew in the total income of all decile groups, except the second and third.

The share of private remittances is the highest in the composition of monetary household income for the tenth decile group (18.7 percent) and compared to 2004, the share of this source of income for the tenth decile has not changed (from 19.0 percent to 18.7 percent).

Compared to 2004, in 2011 the share of remittances within total monetary income has dropped for all decile groups, except the second, fifth and ninth ones. The share of this source is the lowest for the first and second decile groups, furthermore it is 4 times lower than for the tenth decile group (4.8, 4.7 and 18.7 percent, respectively).

Table 7.4 Armenia: Structure of Monetary Income, by Decile Groups, 2004-2011
(Average Monthly Income per Household Member)

(percent)

Decile group	Year	Monetary income	Including						
			Employment	Pensions, benefits, scholarships	Sales of agricultural products	Remittances	o/w:		Other Income
							relatives residing in Armenia	relatives residing outside of Armenia	
I	2004	100	13	45.7	21.9	6.9	3.2	3.7	12.5
	2005	100	6.3	43.1	27.3	6.7	1.9	4.8	16.6
	2006	100	16.2	45.7	18.4	5.8	1.7	4.1	13.9
	2007	100	15	48	12	6.9	1.8	5.1	18.1
	2008	100	13	48.7	15	10.5	3.1	7.3	12.8
	2009	100	8.5	51.5	14.5	6	1.9	4.1	19.6
	2010	100	11.5	52.2	9.2	6	2.1	3.9	21.1
	2011	100	11.8	48.1	15.4	4.8	1.5	3.3	19.9
II	2004	100	21.8	42.6	18.4	4.3	1.9	2.2	12.9
	2005	100	20.7	45.7	13.8	7	3	3.9	12.8
	2006	100	33.7	38.8	11.9	6	1.3	4.7	9.6
	2007	100	33	35.7	14.4	6.2	2.3	3.8	10.7
	2008	100	30.8	40.9	16.6	6.2	1.3	4.8	5.5
	2009	100	25	48	8.9	4.9	1.2	3.7	13.2
	2010	100	24.8	44.4	10.2	6.4	1.8	4.5	14.2
	2011	100	30	41.7	10.5	4.7	0.6	4.1	13.1
III	2004	100	32.8	35.1	14.7	7.2	2.5	4.6	10.2
	2005	100	40	31.7	11.7	6.6	1.8	4.7	10
	2006	100	46.4	31.4	9.3	5.1	1	4	7.8
	2007	100	44.4	27.9	15	5.5	0.9	4.6	7.2
	2008	100	46.7	32.1	12.1	5.9	1	4.8	3.2
	2009	100	41.7	33.3	10.4	7.7	1.8	5.9	6.9
	2010	100	40	34.2	6.9	7	1.4	5.6	11.8
	2011	100	43.2	31.7	8.7	7.0	1.5	5.5	9.4
IV	2004	100	42.2	26.1	16	7.4	2.4	4.7	8.3
	2005	100	49.8	25.3	9.7	7.7	2.5	5	7.5
	2006	100	49.7	26.8	11.1	5.6	0.8	4.8	6.8
	2007	100	56.2	23.8	10.2	5.5	1.2	4.3	4.3
	2008	100	50.4	26.3	11.7	8.2	1.2	7	3.4
	2009	100	53.6	25.7	6.9	6.4	1.4	5	7.5

PART II

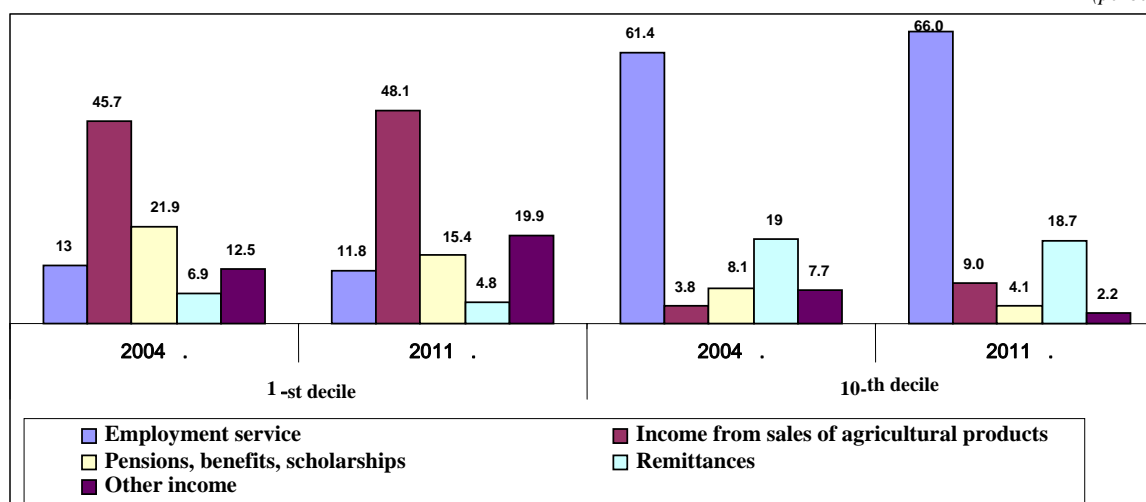
Decile group	Year	Monetary income	Including						
			Employment	Pensions, benefits, scholarships	Sales of agricultural products	Remittances	o/w:		Other In come
							relatives residing in Armenia	relatives residing outside of Armenia	
	2010	100	53.5	26.7	4.8	7.5	1.1	6.5	7.4
	2011	100	52.8	28.1	6.4	7.3	2.1	5.2	5.4
V	2004	100	49.9	23.9	12.3	7.4	1.7	5.7	6.5
	2005	100	51.4	26.9	9.5	7.2	1.7	5.4	5
	2006	100	58.1	20.2	8.7	6.4	1.1	5.3	6.6
	2007	100	56.6	22.5	9.3	7.8	1.1	6.7	3.8
	2008	100	52.4	24.6	10.4	10	1.6	8.4	2.6
	2009	100	54.8	25.6	6.6	8.3	1.5	6.8	4.7
	2010	100	58.1	22.7	3.6	10.1	1.6	8.5	5.4
	2011	100	54.7	26.5	6.3	8.2	1.0	7.2	4.3
VI	2004	100	53.1	19.5	14.1	8.4	2.8	5.5	4.9
	2005	100	60.3	18.8	9.4	7.2	2	5.2	4.3
	2006	100	54.9	19.9	12.4	6.5	1.1	5.4	6.3
	2007	100	62.1	18.8	8.2	8.3	1.3	6.9	2.6
	2008	100	57.6	23.5	6.7	8.9	2.1	6.8	3.3
	2009	100	59.1	26.8	5.5	5.7	0.7	5	2.9
	2010	100	58.2	25.1	4.4	7.6	0.7	6.9	4.7
	2011	100	60.4	26	3.9	6.7	0.8	5.9	3
VII	2004	100	56.5	15.3	12.4	11	2.3	8.6	4.8
	2005	100	60.8	16.2	10.9	9	1.7	7.3	3.1
	2006	100	63.9	13.7	10.3	6.4	1.5	4.9	5.7
	2007	100	67.3	15	5.6	8.8	2.5	6.1	3.3
	2008	100	65.9	19.1	5	8.4	1.4	7	1.6
	2009	100	63.2	21.1	3.2	9.7	1.4	8.3	2.8
	2010	100	60	23.6	3	9.4	1.8	7.6	4
	2011	100	60.9	20.4	4.6	10.8	1	9.8	3.3
VIII	2004	100	64.3	11.5	10.4	10.4	1.8	8.6	3.4
	2005	100	66.1	12.5	8.6	9.9	2.5	7.4	2.9
	2006	100	65.8	10.8	10.1	8.6	2	6.6	4.7
	2007	100	69.2	10.6	7.5	10.5	1.8	8.7	2.2
	2008	100	65.7	19.9	4.4	8.6	1.4	7.2	1.4
	2009	100	62.4	17.4	5.7	9.9	0.9	9	4.6
	2010	100	65.8	18.2	3.1	10.2	2.2	8	2.7
	2011	100	64.2	18.5	4.1	10.1	1.1	9	3.1
IX	2004	100	67	8.1	9.7	11.9	2.3	9.6	3.3
	2005	100	71.1	6.8	9.3	10.6	2.3	8.3	2.2
	2006	100	71.1	6.9	8.5	9.9	2.5	7.4	3.6
	2007	100	73.7	7.8	5	12.1	1.9	10.2	1.4
	2008	100	72.4	10.8	4	11.1	1.8	9.3	1.7
	2009	100	67.3	15.8	3.8	9.9	1.2	8.6	3.2
	2010	100	72.4	12.6	2.9	10.5	1.7	8.8	1.6
	2011	100	67.1	12.5	3.7	13.7	2.5	11.2	3.0
X	2004	100	61.4	3.8	8.1	19	3.3	15.6	7.7
	2005	100	67.5	3.6	9.9	15.1	1.8	13.3	3.9
	2006	100	69.9	4	6.6	14	1.9	12.1	5.5
	2007	100	74	4.6	5.1	14.8	1.9	12.9	1.5

Decile group	Year	Monetary income	Including						
			Employment	Pensions, benefits, scholarships	Sales of agricultural products	Remittances	o/w:		Other income
							relatives residing in Armenia	relatives residing outside of Armenia	
	2008	100	72.7	8.2	4.5	12.6	1.9	10.7	1.9
	2009	100	68.4	10.1	6.4	12.5	1.4	11.1	2.6
	2010	100	64.3	7.7	2.7	20.6	1.4	19.2	4.7
	2011	100	66	9	4.1	18.7	2.1	16.6	2.2

Source: ILCS 2004-2011

Figure 7.2 Armenia: Structure of Monetary Income for Households of the First and the Tenth Decile Groups, 2004 and 2011 (Average Monthly Income per Household Member)

(percent)



Source: ILCS 2004-2011

7.2 Household Expenditure

Consumption expenditures are another indicator of household material welfare. Monetary and non-monetary expenses are considered under household consumption expenditures.

Household consumption expenditures include the sum of payments made by households within the reporting period to purchase food and non-food goods and services, expenses on food consumed out of home, expenses on durable goods and services, as well as own produced food consumed (used) by the household and food received free of charge from relatives or third persons, are all expressed in monetary terms.

Household consumption expenditures do not include taxes, fund-raising, payment of debts, payment of alimony, assistance to relatives, penalties, repayment of credits and other expenses that are not related to consumption, accumulations, as well as expenses related to production activity of households (acquisition of seeds, cattle, raw material).

Consumption expenditures of households include:**Food products**

- Meat and meat products
- Milk and milk products
- Eggs
- Fish and fish products
- Sugar and confectionary
- Butter and vegetable oils
- Potato
- Vegetable crops
- Fruits, berries, nuts and grape
- Bread and bakery goods
- Other food
- Food consumed out of home

Alcoholic beverages**Tobacco****Non-food products**

- Clothing, textile, shoes
- Furniture, carpets, home appliances
- Hygiene items and medicaments
- Means of transportation, spare parts and fuel
- Other non-food products

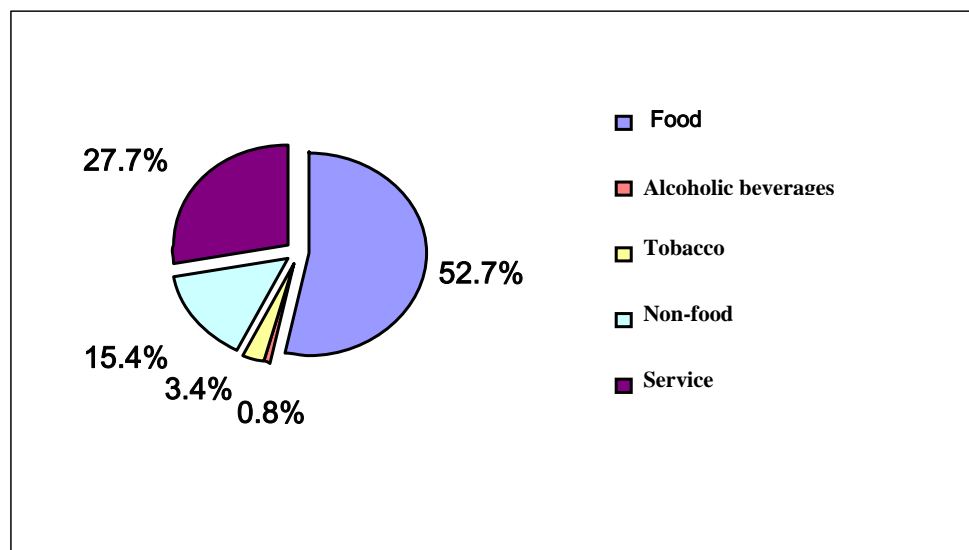
Services

- Utilities (excluded phone)
- Cultural, leisure, and sports
- Education, training, and preschool education
- Medical and sanatorium
- Transportation and communication
- Other services

The structure of consumption expenditures in 2011 is presented in Figure 7.3. Available data suggests that expenses on food constitute more than half of consumption expenditures of population (52.7 percent). The share of this expenditure item in total consumption expenditures, as compared to 2004 (56.1 percent), diminished (Table 7.5).

Figure 7.3 Armenia: Structure of Household Consumption Expenditures in 2011
(Average Monthly Expenditures per Household Member)

(percent)



Source: *ILCS 2011*

Changes in the structure of household consumption expenditures between 2004, 2008-2011 according to the survey results are presented in the table below:

Table 7.5 Armenia: Structure of Household Consumption Expenditures, 2004, 2008-2011

Expenditure items	Average monthly expenditures per household member									
	AMD					%				
	2004	2008	2009	2010	2011	2004	2008	2009	2010	2011
Consumption,	19251	28878	27667	28646	32585	100	100	100	100	100
including:										
Food	10797	14984	14145	14844	17184	56.1	51.9	51.1	51.8	52.7
of which:										
food consumed										
outside home	227	449	389	452	434	1.2	1.6	1.4	1.6	1.3
Alcoholic beverages	163	227	238	272	245	0.8	0.8	0.9	1.0	0.8
Tobacco	808	1019	1035	1009	1123	4.2	3.5	3.7	3.5	3.4
Non-food products	2787	4730	4294	4439	5022	14.5	16.4	15.5	15.5	15.4
Services	4696	7918	7955	8082	9011	24.4	27.4	28.8	28.2	27.7
of which:										
health	1500	1035	888	1136	686	7.8	3.6	3.2	4.0	2.1
education	708	1221	833	141	167	3.7	4.2	3.0	0.5	0.5
housing utilities	1146	2635	2950	3008	3567	6.0	9.1	10.7	10.5	10.9
transport	694	967	1101	906	1003	3.6	3.3	4.0	3.2	3.1
communication	291	1404	1285	1424	1570	1.5	4.9	4.6	5.0	4.8
culture	3	3	4	4	12	0.0	0.0	0.0	0.0	0.0
legal services	3	16	15	121	92	0.0	0.1	0.1	0.4	0.3
other services	351	637	879	1342	1914	1.8	2.2	3.2	4.7	6.0

Source: ILCS 2004, 2008-2011

The share of expenses on food was still relatively large in total consumption expenditures of rural households. As compared to 2004, in rural communities the share of expenses on food in 2011 in total consumption expenditures decreased (from 62.5 percent to 60.6 percent). In contrary, the share of services, particularly the payments for communication has increased. In 2011, share of expenses on non-food products in consumption expenditures among urban and rural population was quite similar (15.8 and 14.5 percent, respectively). The share of expenses on housing utilities among urban population was higher than in case of rural population (Table 7.6; Figure 7.4).

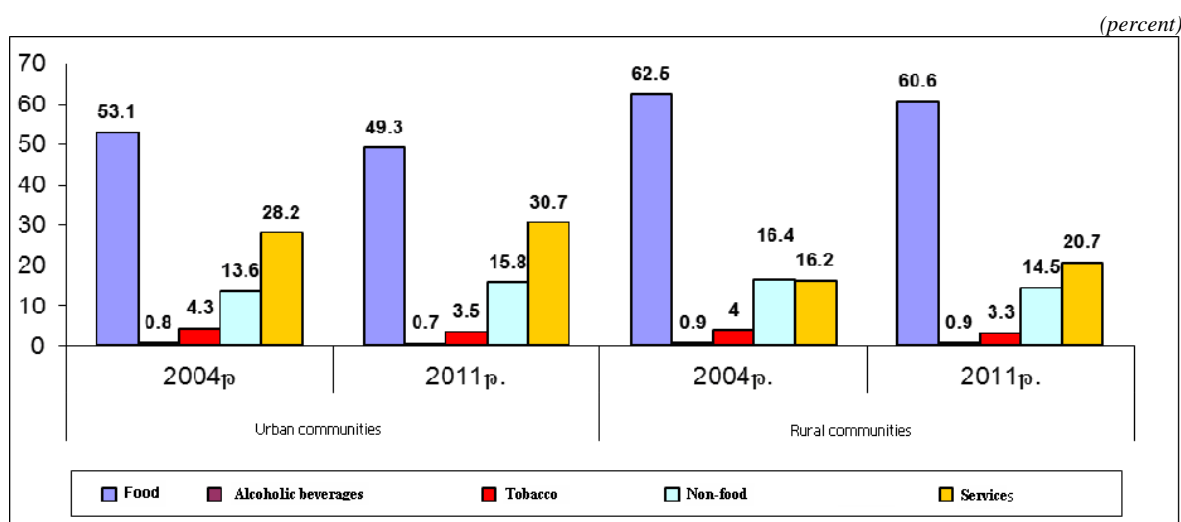
Table 7.6 Armenia: Structure of Household Consumption Expenditures by Urban/Rural Communities, 2004 and 2011 (Average Monthly Expenditures Per Household Member)

Expenditure items	Urban communities				Rural communities			
	AMD		%		AMD		%	
	2004	2011	2004	2011	2004	2011	2004	2011
Consumption expenditure	20933	35041	100	100	16458	28059	100	100
including								
Food, of which	11109	17277	53.1	49.3	10281	17010	62.5	60.6
Food consumed out of home	321	623	1.5	1.8	72	84	0.4	0.3
Alcoholic beverages	173	236	0.8	0.7	146	263	0.9	0.9
Tobacco	894	1225	4.3	3.5	666	934	4.0	3.3
Non-food products	2841	5546	13.6	15.8	2695	4059	16.4	14.5
Services; including	5916	10757	28.2	30.7	2670	5793	16.2	20.7
Health care	1794	707	8.6	2.0	1012	537	6.1	1.9
Education	976	249	4.7	0.7	265	15	1.6	0.1
Utilities	1382	4046	6.6	11.5	755	2685	4.6	9.6

Expenditure items	Urban communities				Rural communities			
	AMD		%		AMD		%	
	2004	2011	2004	2011	2004	2011	2004	2011
Transport	929	1226	4.4	3.5	303	591	1.8	2.1
Communication	421	1870	2.0	5.3	75	1017	0.5	3.6
Culture	4	7	0.0	0.0	0	21	0	0.1
Legal services	4	123	0.0	0.4	0	35	0.0	0.1
Other services	406	2529	1.9	7.1	260	892	1.6	3.3

Source: ILCS 2004 and 2011

Figure 7.4 Armenia: Structure of Household Consumption Expenditures by Urban/Rural Communities, 2004 and 2011 (Average Monthly Expenditures Per Household Member)



Source: ILCS 2004 and 2011

A more detailed breakdown of household consumption expenditures in 2008-2011 by urban/rural communities is presented in Annex 3. Table A7.1.

7.3. Assessment of Inequality in Income and Expenditure Distribution

The indicators on expenditures serve as a basis for the assessment of household living standards more reliably than data on incomes, because the latter are often understated by the interviewees during the interview.

The ratio of “polar” quintiles is calculated to distinguish the population by income and expenditures. This is the ratio of income or expenditures of the 20 percent best-off population to that of the most vulnerable 20 percent of population. According to that assessment, the ratio of income of the 20 percent best-off and the most vulnerable 20 percent decreased in 2011 as compared to 2004, from 10.6 to 8.0 times, while the decline in terms of consumption expenditures was from 5.8 to 5.4 times (Table 7.7). In 2011, the ratio of the “polar” quintiles by monetary income of population was the same as in 2007, 2009 and 2010.

Table 7.7 Armenia: Ratio of 20 Percent of Best-off Population to 20 Percent of the Most Vulnerable Population by Income and Expenditures, 2004-2011

	Ratio of income and expenses of 20% of best-off population and 20% of the most vulnerable population							
	2004	2005	2006	2007	2008	2009	2010	2011
By monetary income	10.6 times	9.5 times	7.6 times	8.0 times	7.8 times	8.0 times	8.0 times	8.0 times
By consumer expenditures	5.8 times	6.0 times	5.4 times	5.6 times	5.2 times	5.1 times	5.2 times	5.4 times

Source: *ILCS 2004-2011***Table 7.8 Armenia: Ratio of 10 Percent of Best-off Population and 10 Percent of the Most Vulnerable Population by Income and Expenditures, 2004-2011**

	Ratio of income and expenses of 10% of best-off population and 10% of the most vulnerable population							
	2004	2005	2006	2007	2008	2009	2010	2011
By monetary income	20.8 times	17.9 times	13.9 times	15.6 times	14.1 times	14.5 times	14.2 times	14.8 times
By consumer expenditures	9.5 times	10.0 times	8.7 times	8.9 times	8.0 times	7.9 times	8.1 times	8.5 times

Source: *ILCS 2004-2011*

The ratio of the “polar” deciles of population by income or expenditure (the ratio of income or expenditures of the best-off 10 percent population to that of the most vulnerable 10 percent population) is more distinct than the quintile ratio. In 2011, this ratio equaled 8.5 times for consumer expenditures and 14.8 times for monetary income of population.

Analysis of the main indicator of inequality in the living standards of population, the Gini coefficient calculated on the basis of income and expenditure distribution, is presented in the third chapter of this report. Table A7.2 of Annex 3 presents the change in the structure of average monthly consumption expenditures per household member by decile groups over 2004-2011.

As expected, the share of expenses on food was larger in total consumption expenditures for poor households. Over the reporting period of 2004-2011, expenses on services incurred by households within the first decile group almost doubled (Figure 7.5; Table 7.9). Households of the tenth decile used more services and purchased more non-food products as compared with the households of the first decile.

Table 7.9 Armenia: Share of Main Expenditure Items in Total Household Consumption Expenditures by Decile Groups, 2004-2011 (Average Monthly Expenditures Per Household Member)

Decile group	Year	Consumer expenditure	including				
			food *	alcoholic beverages	tobacco	non-food products	services
I	2006	100	73.4	0.4	5.1	8.6	12.5
	2007	100	72.5	0.3	4.4	8.6	14.2
	2008	100	72.7	0.2	3.9	7.0	16.2
	2009	100	69.7	0.4	4.6	7.2	18.1
	2010	100	67.4	0.4	4.5	7.3	20.4

Decile group	Year	Consumer expenditure	including				
			food *	alcoholic beverages	tobacco	non-food products	services
	2006	100	63.6	0.2	5.1	7.7	23.4
	2007	100	64.6	0.3	3.9	8.5	22.7
	2011	100	62.9	0.3	4.4	8.2	24.2
II	2004	100	71.4	0.4	4.7	10.2	13.3
	2005	100	70.4	0.4	4.9	9.3	15.0
	2006	100	72.2	0.3	4.3	8.4	14.8
	2007	100	68.3	0.5	3.8	9.2	18.2
	2008	100	66.3	0.4	4.0	8.2	21.1
	2009	100	63.1	0.3	4.1	9.2	23.3
	2010	100	63.5	0.3	4.2	9.3	22.7
	2011	100	62.9	0.4	4.6	9.1	23.0
	III	2004	100	71.7	0.6	5.1	8.9
2005		100	71.2	0.4	4.6	8.9	14.9
2006		100	69.3	0.5	4.3	9.7	16.2
2007		100	65.5	0.5	4.8	8.5	20.7
2008		100	62.8	0.4	4.4	9.4	23.0
2009		100	61.0	0.4	4.7	10.6	23.3
2010		100	61.6	0.5	4.3	11.1	22.5
2011		100	61.7	0.4	4.0	10.9	23.0
IV	2004	100	69.5	0.4	5.3	10.7	14.1
	2005	100	68.4	0.5	4.7	10.6	15.8
	2006	100	66.9	0.5	5.1	9.8	17.7
	2007	100	62.8	0.6	5.2	9.4	22.0
	2008	100	60.4	0.6	4.1	11.1	23.8
	2009	100	59.6	0.5	4.7	11.7	23.5
	2010	100	60.7	0.6	4.1	11.5	23.1
	2011	100	60.6	0.3	4.5	11.8	22.8
V	2004	100	66.6	0.6	5.2	11.5	16.1
	2005	100	66.6	0.5	4.8	11.3	16.8
	2006	100	66.2	0.7	4.8	12.4	15.9
	2007	100	61.7	0.6	4.6	10.7	22.4
	2008	100	57.5	0.6	4.7	12.2	25.0
	2009	100	58.2	0.6	5.0	12.1	24.1
	2010	100	59.2	0.6	4.1	12.0	24.1
	2011	100	58.6	0.4	4.3	12.0	24.7
VI	2004	100	64.1	0.7	4.9	12.5	17.8
	2005	100	65.3	0.6	4.9	10.9	18.3
	2006	100	64.0	0.6	5.0	11.6	18.8
	2007	100	59.8	0.6	4.4	12.8	22.4
	2008	100	57.1	0.5	3.9	13.5	25.0
	2009	100	55.1	0.7	4.5	12.9	26.8
	2010	100	57.4	0.6	4.4	13.7	23.9
	2011	100	59.7	0.5	3.6	13.5	22.7
VII	2004	100	61.7	0.8	4.5	13.9	19.1
	2005	100	62.3	0.7	5.0	12.4	19.6
	2006	100	60.3	0.9	4.8	12.6	21.4
	2007	100	58.7	0.8	4.3	13.3	22.9
	2008	100	55.3	0.6	3.5	16.0	24.6

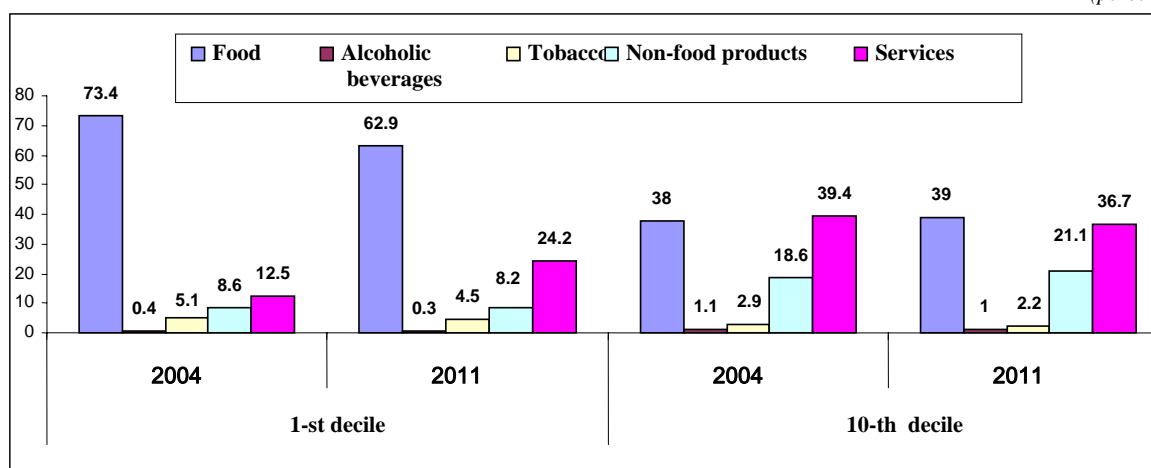
Decile group	Year	Consumer expenditure	including				
			food *	alcoholic beverages	tobacco	non-food products	services
	2009	100	54.7	0.9	3.8	15.3	25.3
	2010	100	55.3	0.7	4.3	14.6	25.1
	2011	100	58.1	0.8	4.1	13.8	23.2
VIII	2004	100	59.3	0.9	4.8	13.7	21.3
	2005	100	59.1	0.7	5.0	12.9	22.3
	2006	100	57.9	0.9	4.8	13.3	23.1
	2007	100	55.6	1.0	4.1	14.7	24.6
	2008	100	52.5	0.9	3.9	16.6	26.1
	2009	100	51.5	0.9	3.9	17.0	26.7
	2010	100	54.8	0.9	3.7	15.8	24.8
	2011	100	56.3	0.7	3.6	15.1	24.3
	IX	2004	100	55.1	1.0	4.0	16.3
2005		100	56.3	1.1	3.8	14.7	24.1
2006		100	53.9	1.1	4.0	15.6	25.4
2007		100	49.8	1.1	3.4	18.3	27.4
2008		100	47.3	0.8	3.2	19.1	29.6
2009		100	49.2	1.1	3.3	17.2	29.2
2010		100	52.1	1.4	3.7	17.2	25.6
2011		100	53.0	1.1	3.4	15.5	27.0
X	2004	100	38.0	1.1	2.9	18.6	39.4
	2005	100	38.6	1.3	2.5	21.0	36.6
	2006	100	41.1	1.3	2.8	18.7	36.1
	2007	100	39.9	1.2	2.3	22.5	34.1
	2008	100	40.1	1.2	2.6	22.6	33.5
	2009	100	38.9	1.2	2.5	20.1	37.3
	2010	100	38.3	1.4	2.3	20.1	37.9
	2011	100	39.0	1.0	2.2	21.1	36.7

*) Including consumption cost of own production food

Source: ILCS 2004-2011

Figure 7.5 Armenia: Structure of Consumption Expenditures in Households of the First and the Tenth Decile Groups, 2004 and 2011 (Average Monthly Expenditures Per Household Member)

(percent)



Source: ILCS 2004 and 2011

*) Including consumption cost of own production food

A study of amounts spent on power bearing substances by **consumption expenditures** clearly demonstrate the difference in consumption. Thus, in 2011 the first decile group has spent 786 AMD monthly for gas, the tenth decile group 4036 AMD, and for energy 770 AMD and 2294, respectively.

7.4 Household Consumption

Population living standards are studied using consumption indicators. The term “consumed food” refers to products, which were purchased, received from one’s own farm and stored as well as products received as a donation from other sources during the reporting period.

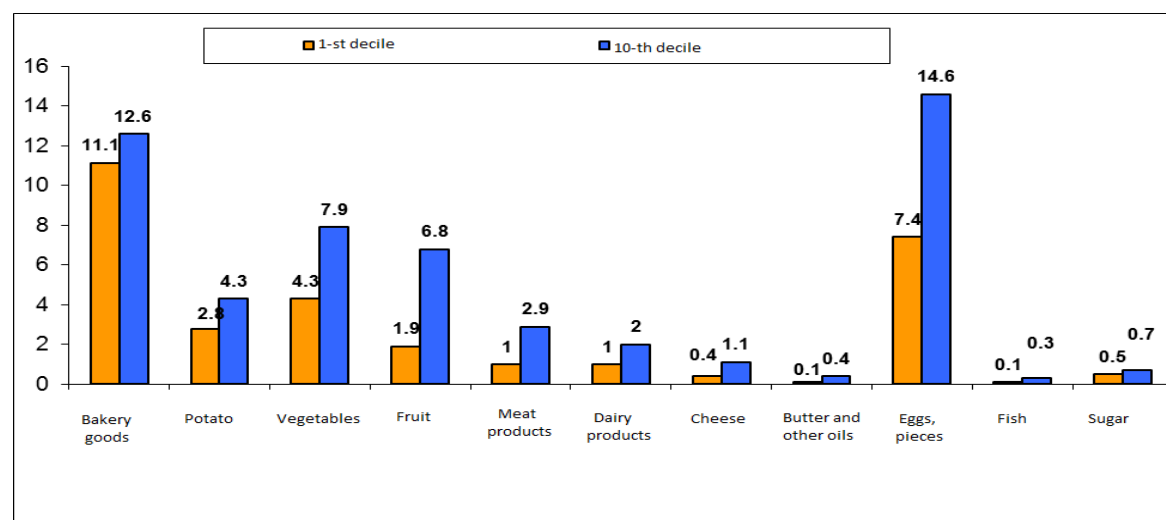
The consumption of food is grouped as follows:

Bakery goods

- Potato
- Vegetables and vegetable crops
- Fruit and berries (including dried fruit)
- Sugar
- Meat and meat products
- Fish products
- Milk and milk products
- Eggs
- Cheese
- Butter and oil
- Vegetable and other oils

A study of food consumption by decile groups of consumption expenditures clearly demonstrates the differences in consumption. Thus, in 2011, monthly consumption per household member of the tenth decile, as compared to the first decile, was higher 4 times for butter, 2.9 times for meat, 3.6 times for fruits, 2 times for eggs, 1.8 times for vegetables and vegetable crops, 2 times for milk and milk products (Figure 7.6). It should be noted that the comparison of the first and the tenth deciles over 2004 and 2011 revealed positive dynamics in terms of consumption of such types of food as vegetables and vegetable crops, fruit and berries, meat and meat products, cheese, eggs, sugar, vegetable and other oils.

Figure 7.6 Armenia: Consumption of Basic Food Products by Consumption Expenditures of the First and the Tenth Decile Groups, 2011 (Per Household Member, monthly, kg)



Source: *ILCS 2011*

PART II

The average monthly consumption of basic food products for 2004-2011 by decile groups of consumption expenditures (per household member) is presented in Table 7.10.

Table 7.10 Consumption of Main Types of Food by Consumer Expenditures Decile Groups, 2004-2011 (Per Household Member, monthly, kg)

2004	Total	Decile groups									
		I	II	III	IV	V	VI	VII	VII	IX	X
Bread product	12.8	12.5	12.2	12.9	12.7	12.9	12.4	13.2	13.8	13.1	12.8
Potato	4.0	3.91	3.73	3.93	3.86	4.10	3.94	4.27	4.38	4.30	4.32
Vegetable crops	5.3	3.7	4.3	4.8	5.1	5.7	5.4	6.2	6.3	6.4	6.3
Fruits and berries, including dried	2.7	1.6	1.7	2.0	2.4	2.6	2.8	3.2	3.4	3.8	4.2
Meat and meat products	1.4	0.7	0.8	1.0	1.1	1.3	1.4	1.7	1.9	2.3	2.6
Milk, yogurt, liter	1.9	1.3	1.6	2.0	1.9	1.9	2.0	2.2	2.4	2.1	1.9
Cheese	0.7	0.5	0.6	0.7	0.7	0.7	0.7	0.8	0.9	0.9	0.9
Butter and cooking butter	0.2	0.4	0.5	0.5	0.6	0.6	0.6	0.7	0.7	0.8	0.7
Eggs, pieces	8.5	5.2	6.4	7.8	8.2	8.8	8.7	9.7	10.9	10.9	11.7
Fish products	0.2	0.1	0.1	0.2	0.2	0.2	0.2	0.2	0.2	0.3	0.3
Sugar	0.6	0.5	0.5	0.5	0.6	0.6	0.6	0.7	0.7	0.6	0.6
Vegetable oil and other oil, l.	0.3	0.3	0.3	0.3	0.3	0.3	0.3	0.3	0.3	0.3	0.3

2005	Total	Decile groups									
		I	II	III	IV	V	VI	VII	VII	IX	X
Bread product	13.3	11.5	12.4	12.8	13.0	13.3	13.8	13.8	14.0	14.5	14.2
Potato	4.2	3.9	3.8	3.8	3.8	4.0	4.3	4.3	4.3	4.9	4.9
Vegetable crops	5.8	3.5	4.0	5.0	5.1	5.6	5.9	6.7	6.9	7.4	7.6
Fruits and berries, including dried	3.5	1.6	2.1	2.3	2.6	3.2	3.3	4.0	5.0	5.2	6.1
Meat and meat products	1.7	0.7	1.0	1.0	1.2	1.4	1.6	1.9	2.1	2.5	3.3
Milk, yogurt, liter	1.9	1.2	1.4	1.7	1.7	1.9	2.1	1.9	2.2	2.3	2.4
Cheese	0.8	0.5	0.6	0.7	0.7	0.8	0.9	0.8	1.0	1.0	1.0
Butter and cooking butter	0.7	0.4	0.5	0.6	0.6	0.6	0.7	0.7	0.7	0.8	0.9
Eggs, pieces	9.2	4.4	6.4	7.9	8.0	8.9	9.9	10.1	10.6	12.4	13.4
Fish products	0.3	0.2	0.2	0.2	0.2	0.2	0.3	0.3	0.3	0.4	0.4
Sugar	0.7	0.5	0.5	0.6	0.6	0.6	0.7	0.7	0.8	0.8	0.8
Vegetable oil and other oil, l.	0.3	0.2	0.3	0.3	0.3	0.3	0.3	0.3	0.3	0.3	0.3

2006	Total	Decile groups									
		I	II	III	IV	V	VI	VII	VII	IX	X
Bread product	13.8	11.8	12.8	13.3	13.7	13.7	13.9	14.2	14.4	14.9	15.2
Potato	4.5	3.8	4.1	4.4	4.0	4.5	4.4	4.7	5.0	4.9	5.1
Vegetable crops	6.1	3.9	5.0	5.3	5.8	6.3	6.3	6.6	7.1	7.5	7.5
Fruits and berries, including dried	3.8	1.9	2.7	3.0	3.0	3.4	3.7	4.3	4.6	4.9	6.5

PART II

2006	Total	Decile groups									
		I	II	III	IV	V	VI	VII	VII	IX	X
Meat and meat products	1.9	1.0	1.1	1.3	1.5	1.7	2.1	2.1	2.5	2.7	3.6
Milk, yogurt, liter	1.9	1.0	1.4	1.7	1.7	2.4	2.1	2.1	2.0	2.1	2.2
Cheese	1.2	0.7	0.9	1.0	1.1	1.2	1.2	1.3	1.4	1.5	1.5
Butter and cooking butter	0.7	0.4	0.5	0.6	0.7	0.7	0.7	0.7	0.8	0.8	0.9
Eggs, pieces	8.7	4.8	6.9	7.6	7.9	8.8	9.3	9.3	9.9	10.7	11.9
Fish products	0.2	0.1	0.1	0.1	0.2	0.2	0.2	0.2	0.3	0.3	0.4
Sugar	0.7	0.5	0.6	0.6	0.7	0.7	0.7	0.7	0.8	0.8	0.8
Vegetable oil and other oil, l.	0.3	0.3	0.3	0.3	0.3	0.3	0.3	0.3	0.3	0.4	0.4

2007	Total	Decile groups									
		I	II	III	IV	V	VI	VII	VII	IX	X
Bread product	13.3	11.2	12.2	12.7	12.8	13.6	13.6	14.0	14.2	14.1	14.2
Potato	3.9	2.9	3.2	3.7	3.8	4.1	4.0	4.1	4.3	4.4	4.4
Vegetable crops	6.4	3.4	4.7	5.4	5.8	6.4	7.1	7.3	8.1	7.8	8.0
Fruits and berries, including dried	3.9	2.0	2.4	3.0	3.1	3.4	4.0	4.4	5.3	5.1	6.1
Meat and meat products	1.9	1.0	1.1	1.4	1.5	1.7	1.9	2.2	2.4	2.6	3.5
Milk, yogurt, liter	1.9	1.3	1.7	1.6	1.7	1.9	2.1	1.9	2.2	2.2	2.1
Cheese	1.2	0.6	0.8	1.0	1.1	1.3	1.5	1.5	1.4	1.4	1.4
Butter and cooking butter	0.5	0.3	0.4	0.4	0.4	0.4	0.5	0.5	0.5	0.5	0.7
Eggs, pieces	9.4	6.0	7.4	7.8	7.9	9.2	9.9	10.4	11.0	11.3	12.7
Fish products	0.1	0.1	0.1	0.1	0.1	0.1	0.1	0.1	0.2	0.2	0.3
Sugar	0.8	0.5	0.7	0.7	0.7	0.8	0.8	0.8	0.9	0.8	0.9
Vegetable oil and other oil, l.	0.5	0.4	0.4	0.5	0.5	0.5	0.6	0.5	0.6	0.6	0.6

2008	Total	Decile groups									
		I	II	III	IV	V	VI	VII	VII	IX	X
Bread product	12.7	11.5	11.8	12.2	12.5	13.2	13.5	13.4	13.1	12.9	13.0
Potato	3.9	3.3	3.5	3.6	3.8	4.0	3.9	4.1	4.2	4.2	4.2
Vegetable crops	6.3	5.2	5.4	5.9	5.9	6.1	7.0	7.0	6.6	6.5	7.1
Fruits and berries, including dried	3.9	2.0	2.5	2.7	3.4	3.8	4.8	4.8	4.9	5.0	5.1
Meat and meat products	2	1	1.2	1.3	1.6	1.8	2.1	2.2	2.5	2.8	3.5
Milk, yogurt, liter	1.7	1.3	1.4	1.6	1.6	1.8	1.9	2.0	1.9	1.8	1.9
Cheese	1.06	1.20	1.34	1.16	1.04	1.00	1.01	.97	.93	.94	1.01
Butter and cooking butter	0.4	0.2	0.3	0.3	0.3	0.4	0.4	0.4	0.5	0.5	0.5
Eggs, pieces	10.1	5.9	7.8	8.5	9.0	10.5	10.6	11.5	11.5	12.7	13.2
Fish products	0.2	0.0	0.1	0.1	0.1	0.2	0.2	0.2	0.2	0.2	0.3
Sugar	0.7	0.8	0.8	0.7	0.6	0.7	0.6	0.6	0.7	0.7	0.7
Vegetable oil and other oil, l.	0.6	0.6	0.6	0.5	0.5	0.5	0.5	0.6	0.5	0.6	0.6

PART II

2009	Total	Decile groups									
		I	II	III	IV	V	VI	VII	VII	IX	X
Bread product	12.3	11.9	12.0	12.2	12.0	12.1	12.0	12.4	12.4	12.8	12.6
Potato	3.9	3.8	3.6	3.6	3.9	3.9	4.0	4.0	4.0	4.4	4.0
Vegetable crops	6.1	4.3	4.8	5.2	5.9	6.4	6.1	6.6	6.9	7.0	7.4
Fruits and berries, including dried	4.5	2.5	2.8	3.7	3.8	4.3	4.4	5.2	5.7	5.9	6.9
Meat and meat products	2.0	1.0	1.3	1.5	1.7	1.7	1.9	2.2	2.4	2.9	3.4
Milk, yogurt, liter	1.7	1.1	1.4	1.5	1.7	1.6	1.7	2.1	2.1	2.0	1.9
Cheese	1.0	0.7	0.8	0.9	1.0	1.0	1.1	1.1	1.2	1.2	1.2
Butter and cooking butter	0.4	0.2	0.2	0.3	0.3	0.3	0.4	0.4	0.4	0.5	0.5
Eggs, pieces	10.5	6.9	8.4	9.2	9.5	10.4	10.6	11.3	12.2	13.1	13.5
Fish products	0.2	0.1	0.1	0.1	0.1	0.1	0.2	0.2	0.2	0.2	0.3
Sugar	0.7	0.6	0.6	0.6	0.7	0.7	0.6	0.7	0.7	0.8	0.7
Vegetable oil and other oil, l.	0.5	0.5	0.5	0.5	0.6	0.6	0.5	0.5	0.6	0.6	0.6

2010	Total	Decile groups									
		I	II	III	IV	V	VI	VII	VII	IX	X
Bread product	11.9	11.5	11.3	11.5	11.8	11.7	12.5	11.7	12.2	12.4	12.2
Potato	3.9	3.4	3.5	3.6	3.8	3.8	4.0	3.8	4.1	4.3	4.2
Vegetable crops	5.7	3.8	4.7	5.0	5.4	5.9	6.1	6.0	6.6	6.7	7.0
Fruits and berries, including dried	4.3	2.0	2.6	3.1	3.7	3.9	4.4	4.7	5.1	5.9	7.4
Meat and meat products	1.8	0.7	1.0	1.2	1.4	1.6	1.8	2.0	2.2	2.6	3.1
Milk, yogurt, liter	1.7	1.3	1.3	1.4	1.7	1.7	1.7	1.7	1.9	1.9	2.0
Cheese	0.8	0.6	0.7	0.7	0.8	0.8	0.8	0.8	0.9	0.9	1.0
Butter and cooking butter	0.3	0.1	0.2	0.2	0.2	0.3	0.3	0.3	0.3	0.4	0.5
Eggs, pieces	11.1	7.2	9.1	9.9	10.9	11.2	12.0	11.6	12.6	12.9	13.2
Fish products	0.1	0.0	0.1	0.1	0.1	0.1	0.1	0.2	0.2	0.3	0.3
Sugar	0.6	0.5	0.5	0.5	0.6	0.6	0.6	0.6	0.7	0.7	0.7
Vegetable oil and other oil, l.	0.5	0.5	0.5	0.5	0.5	0.5	0.6	0.5	0.6	0.6	0.6

2011	Total	Decile groups									
		I	II	III	IV	V	VI	VII	VII	IX	X
Bread product	12.2	11.1	11.2	11.4	11.7	12.0	12.7	13.0	13.2	13.1	12.6
Potato	3.6	2.8	3.1	3.2	3.4	3.4	3.9	4.0	4.0	4.2	4.3
Vegetable crops	6.5	4.3	5.0	5.6	6.2	6.2	7.2	7.3	7.6	7.9	7.9
Fruits and berries, including dried	4.0	1.9	2.5	2.8	3.4	3.5	4.1	4.7	5.1	5.5	6.8
Meat and meat products	1.8	1.0	1.2	1.3	1.5	1.6	1.8	2.1	2.0	2.4	2.9
Milk, yogurt, liter	1.7	1.0	1.4	1.3	1.6	1.7	1.8	1.9	2.0	1.9	2.0
Cheese	0.8	0.4	0.6	0.6	0.8	0.8	0.9	1.0	1.0	1.1	1.1

PART II

2011	Total	Decile groups									
		I	II	III	IV	V	VI	VII	VII	IX	X
Butter and cooking butter	0.2	0.1	0.1	0.1	0.2	0.2	0.3	0.3	0.3	0.3	0.4
Eggs, pieces	11.2	7.4	8.3	9.3	10.3	10.6	12.0	13.0	13.5	13.6	14.6
Fish products	0.1	0.1	0.1	0.1	0.1	0.1	0.1	0.2	0.2	0.2	0.3
Sugar	0.6	0.5	0.5	0.6	0.6	0.6	0.6	0.7	0.7	0.8	0.7
Vegetable oil and other oil, l.	0.6	0.5	0.5	0.5	0.6	0.6	0.6	0.6	0.6	0.6	0.6

Source: *ILCS 2004-2011*