

PART II

ARMENIA – HOUSEHOLD INCOME, EXPENDITURES, AND BASIC FOOD CONSUMPTION

Chapter 6: Household Income*, Expenditures, and Basic Food Consumption

This chapter presents the dynamics of household income, expenditures, and basic food consumption over the period of 2004-2018. The analysis is based on the Integrated Living Conditions Survey data. The diary on current expenditures, consumption, and income is the source of the data. All indicators of household living conditions, as presented in this chapter, are estimated on per capita basis.

6.1. Household Disposable Income

Household income is one of the key indicators to assess the living conditions of population.

Gross household income comprises all articles of monetary income, as well as certain articles of non-monetary income such as own production food consumed (used) by the household, and non-food products and services received free of charge from relatives or third persons, all expressed in monetary terms.

Monetary household income includes the funds received by household members as remuneration for work (excluded income tax and other wage-deductible mandatory social contributions), funds received from self-employment or entrepreneurial activities, social transfers (pensions, monetary social assistance, including unemployment, family, childbirth, childcare and other benefits), private transfers, property rental income, interests, dividends, equity gains, revenues from the sale of shares and other securities, real estate and household property, livestock, and own production food, as well as funds received as assistance from relatives and third persons, or other monetary income.

The amounts and structure of monetary per capita nominal income of households over the periods 2008-2009 and 2017-2018 are presented in Table 6.1.

Table 6.1 – Armenia: Types of Household Nominal Income, 2008-2009 and 2017-2018

Types of income	Average monthly per capita household income							
	AMD				Percent			
	2008	2009	2017	2018	2008	2009	2017	2018
1. Monetary income, including:	26866	28038	58474	61047	90.8	91.8	94.9	95.1
Hired employment	14491	15328	32198	32314	49.0	50.2	52.2	50.3
Self-employment	2385	1534	5575	6851	8.1	5.0	9.1	10.7
Sales of agricultural products and livestock	1771	1667	3491	4509	6.0	5.5	5.7	7.0
Income on property (rental income, interest, equity gain)	35	25	99	110	0.1	0.1	0.2	0.2
Public pensions and benefits	4870	5615	9932	9945	16.5	18.4	16.1	15.5
Transfers, of which:	2692	2669	5563	5716	9.1	8.7	9.0	8.9
From relatives residing in Armenia	449	354	571	665	1.5	1.2	0.9	1.0
From relatives residing outside of	2243	2315	4992	5051	7.6	7.5	8.1	7.9

* Absolute indicators of household income are considered to be less reliable, since respondents often do not report or underreport their income (due to the propensity to non-disclosure of income), and certain types of income have a strongly demonstrated seasonal nature.

Armenia								
Other income	622	1200	1616	1602	2.0	3.9	2.6	2.5
2. Non-monetary income, including:	2710	2503	3121	3133	9.2	8.2	5.1	4.9
Consumption of own production food	2426	2230	2778	2786	8.2	7.3	4.5	4.4
Non-food products and services received free of charge	284	273	343	347	1.0	0.9	0.6	0.5
Total gross income	29576	30541	61595	64180	100	100	100	100

Source: *ILCS 2008-2009, 2017-2018*

As shown in Table 6.1, over the period of 2008-2018 the share of monetary income increased and the share of non-monetary income decreased within the gross income.

The study of household income by urban and rural communities highlighted the importance of income from hired employment particularly for urban population, comprising 59.1% of their gross income in 2018 (Table 6.2). For rural households, income from hired employment comprising 32.1% of their gross income was 1.8 times smaller than that for urban households. As to the share of income from self-employment, over the period of 2008-2018 it increased from 9.9% to 12.7% in urban communities and from 4.1% to 6.6% in rural communities. In comparison with 2008, the share of income of rural households from the sale of agricultural products and livestock increased in 2018 (from 17.6% to 19.8%). The share of non-monetary income, particularly in the form of own production food, was incomparably larger for rural than for urban households, although this indicator demonstrated a decreasing trend since 2008. In 2018, the share of non-monetary income comprised 11.4% of the income of rural households and only 1.7% of that of urban households. At the same time, the share of private transfers decreased for urban households and increased for rural households (for urban households – from 9.9% in 2008 to 8.5% in 2018, and for rural households – from 7.3% in 2008 to 9.7% in 2018).

Table 6.2 – Armenia: Sources of Household Nominal Income by Urban and Rural Communities, 2008 and 2018 (Average Monthly per Capita Income)

	Urban communities				Rural communities			
	AMD		Percent		AMD		Percent	
	2008	2018	2008	2018	2008	2018	2008	2018
1. Monetary income, including:	30174	68405	96.8	98.3	20754	48907	78.0	88.6
Hired employment	18068	41165	57.9	59.1	7881	17711	29.6	32.1
Self-employment	3084	8810	9.9	12.7	1092	3620	4.1	6.6
Sales of agricultural products and livestock	201	628	0.6	0.9	4670	10911	17.6	19.8
Income on property (rental income, interest, equity gain)	49	165	0.2	0.2	10	19	0.0	0.0
Public pensions and benefits	5006	10366	16.1	14.9	4615	9250	17.3	16.7
Transfers, <i>of which:</i>	3094	5942	9.9	8.5	1950	5343	7.3	9.7
From relatives residing in Armenia	587	943	1.9	1.4	195	207	0.7	0.4
From relatives residing outside of Armenia	2507	4999	8.0	7.1	1755	5136	6.6	9.3

Other income	672	1329	2.2	1.9	536	2053	2.1	3.7
2. Non-monetary income, including:	1010	1208	3.2	1.7	5852	6309	22.0	11.4
Consumption of own production food	686	776	2.2	1.1	5642	6102	21.2	11.1
Non-food products and services received free of charge	324	432	1.0	0.6	210	207	0.8	0.3
Total gross income	31184	69613	100	100	26606	55216	100	100

Source: *ILCS 2008 and 2018*

Table 6.3 below presents the structure of monetary income by decile groups. The study of household monetary income depicts the distribution of income sources and its dynamics over time. Over 2004–2018, the difference between the poorest and the richest decile groups in terms of income from hired employment decreased (from 98 times in 2004 to 56 times in 2018). The difference in terms of income from transfers also decreased from 57 times in 2004 to 22 times in 2018. The difference between the tenth and the first decile groups in terms of income from the sales of agricultural products decreased from 7.7 times in 2004 to 6.8 times in 2018 (Table 6.3 and Graph 6.1).

Table 6.3 – Armenia: Dynamics of Household Nominal Monetary Income, by Decile Groups, 2004 and 2008–2018* (Average Monthly per Capita Income, AMD)

2004	Decile groups of monetary income									
	I	II	III	IV	V	VI	VII	VIII	IX	X
Household monetary income; including	2260	4395	6189	8017	9869	11903	14337	17882	23793	47061
Employment income	294	959	2029	3384	4929	6323	8105	11498	15944	28881
Pensions, benefits, scholarships	1032	1872	2175	2094	2357	2315	2190	2059	1921	1771
Income from sales of agricultural products	495	810	909	1282	1213	1683	1775	1867	2311	3823
Transfers, of which:	157	188	444	592	728	1000	1582	1857	2840	8933
From relatives residing in Armenia	72	83	153	193	162	335	332	314	542	1571
From relatives residing outside of Armenia	84	98	284	378	559	656	1229	1539	2273	7331
Other income	282	566	632	665	642	582	685	601	777	3653

2008	Decile groups of monetary income									
	I	II	III	IV	V	VI	VII	VIII	IX	X
Household monetary income; including	5236	10012	13483	16754	20150	23936	28035	33561	42934	76398
Employment income	682	3085	6298	8442	10553	13783	18467	22034	31085	55560
Pensions, benefits, scholarships	2550	4099	4334	4412	4951	5620	5356	6684	4656	6259
Income from sales of agricultural products	787	1663	1631	1959	2093	1597	1412	1491	1706	3474
Transfers, of which:	549	617	790	1368	2020	2138	2355	2884	4765	9662
From relatives residing in Armenia	162	135	141	198	319	504	388	462	752	1463
From relatives residing outside of Armenia	384	482	649	1171	1701	1634	1965	2421	4013	8198
Other income	668	548	431	572	533	797	445	468	722	1443

2009	Decile groups of monetary income									
	I	II	III	IV	V	VI	VII	VIII	IX	X
Household monetary income; including	5273	9877	13731	17660	21416	25337	30058	36482	45723	76508
Employment income	448	2465	5724	9460	11741	14966	19002	22770	30766	52328
Pensions, benefits, scholarships	2714	4741	4579	4537	5480	6800	6342	6344	7246	7692
Income from sales of agricultural products	765	878	1429	1213	1405	1387	953	2070	1734	4928
Transfers, of which:	315	489	1051	1133	1775	1442	2927	3614	4518	9584
From relatives residing in Armenia	98	118	243	249	315	173	421	311	568	1067
From relatives residing outside of Armenia	217	371	807	884	1457	1269	2506	3303	3951	8517
Other income	1031	1304	948	1317	1015	742	834	1684	1459	1976

2010	Decile groups of monetary income									
	I	II	III	IV	V	VI	VII	VIII	IX	X
Household monetary income; including	6489	11207	15440	19407	23166	27216	32225	39133	49671	91965
Employment income	748	2774	6178	10387	13460	15843	19319	25760	35951	59114
Pensions, benefits, scholarships	3380	4979	5281	5181	5264	6830	7617	7104	6250	7090
Income from sales of agricultural products	599	1145	1065	933	842	1186	979	1205	1439	2438
Transfers, of which:	390	714	1087	1465	2346	2080	3026	3998	5221	18963
From relatives residing in Armenia	136	207	220	205	369	202	578	871	833	1314
From relatives residing outside of Armenia	254	506	866	1260	1967	1874	2448	3127	4379	17649
Other income	1372	1595	1828	1441	1254	1276	1284	1066	810	4360

2011	Decile groups of monetary income									
	I	II	III	IV	V	VI	VII	VIII	IX	X
Household monetary income; including	6530	12242	16757	21181	25880	30582	36501	43972	55171	95095
Employment income	772	3678	7237	11181	14155	18480	22218	28220	37017	62731
Pensions, benefits, scholarships	3143	5104	5307	5954	6861	7965	7452	8148	6882	8575
Income from sales of agricultural products	1005	1287	1457	1363	1642	1182	1694	1815	2030	3928
Transfers, of which:	311	570	1185	1543	2123	2044	3960	4437	7541	17770
From relatives residing in Armenia	97	70	259	455	269	232	375	477	1382	1962
From relatives residing outside of Armenia	214	500	921	1077	1854	1812	3585	3959	6159	15808
Other income	1299	1603	1571	1140	1099	911	1177	1352	1701	2091

2012	Decile groups of monetary income									
	I	II	III	IV	V	VI	VII	VIII	IX	X
Household monetary income; including	7437	13676	18539	23340	28220	33446	39728	48241	60756	118748
Employment income	1075	4505	7600	11999	15363	18755	22465	32647	42900	78523
Pensions, benefits, scholarships	1083	1466	1925	2335	1905	1723	1661	1506	1686	7053
Income from sales of agricultural products	3953	5893	6419	6204	7891	9059	9656	7809	7462	7796
Transfers, of which:	228	646	1311	1756	1821	3085	4575	4930	7902	16148
From relatives residing in Armenia	57	84	161	177	200	459	573	818	901	1485
From relatives residing outside of Armenia	170	554	1150	1579	1621	2626	3991	4111	7001	14663
Other income	1098	1166	1284	1046	1240	824	1371	1349	806	9228

2013	Decile groups of monetary income									
	I	II	III	IV	V	VI	VII	VIII	IX	X
Household monetary income; including	8469	15400	20981	25847	30969	36169	42430	51041	64742	130642
Employment income	1190	6088	9455	13152	16782	20914	26026	32819	43957	84238
Pensions, benefits, scholarships	4214	5152	6490	6852	7727	9527	9084	8112	7956	10912
Income from sales of agricultural products	1031	1339	2443	2225	2409	1703	1534	2333	2336	7208
Transfers, of which:	454	1104	1193	2415	2117	2367	4234	5984	8483	19834
From relatives residing in Armenia	98	188	77	544	248	421	579	613	884	1980
From relatives residing outside of Armenia	355	912	1115	1870	1870	1942	3654	5371	7599	17854
Other income	1580	1717	1400	1203	1934	1658	1552	1793	2010	8450

2014	Decile groups of monetary income									
	I	II	III	IV	V	VI	VII	VIII	IX	X
Household monetary income; including	9382	17253	23343	29414	34774	41080	48243	58685	76763	156509
Employment income	1810	6058	10126	15455	18873	22398	30304	36719	51889	107455
Pensions, benefits, scholarships	4620	6496	6595	7962	9496	10567	10457	10225	8518	8176
Income from sales of agricultural products	927	1523	2519	1928	1535	1624	1339	1609	3817	9652
Transfers, of which:	357	1358	2259	2181	3225	4616	4402	7724	10393	24748
From relatives residing in Armenia	47	131	156	398	470	616	790	640	1278	2137
From relatives residing outside of Armenia	310	1213	2103	1782	2738	3977	3593	7084	9099	22611
Other income	1668	1818	1844	1888	1645	1875	1741	2409	2146	6478

2015	Decile groups of monetary income									
	I	II	III	IV	V	VI	VII	VIII	IX	X
Household monetary income; including	10299	19082	25414	31424	37664	43682	50708	60711	76501	168604
Employment income	1278	6743	12053	17175	22168	25230	30965	38818	53268	128878
Pensions, benefits, scholarships	4945	6853	7159	8080	10127	12671	11410	11079	9910	10720
Income from sales of agricultural products	1234	2447	2637	2031	1726	1334	1928	1958	2475	8980
Transfers, of which:	526	1097	1665	2395	1857	3114	3949	7227	8692	16476
From relatives residing in Armenia	86	255	217	515	219	60	337	918	963	1096
From relatives residing outside of Armenia	440	842	1427	1850	1637	3050	3612	6308	7729	15380
Other income	2316	1942	1900	1743	1786	1333	2456	1629	2156	3550

2016	Decile groups of monetary income									
	I	II	III	IV	V	VI	VII	VIII	IX	X
Household monetary income; including	9349	18510	25390	32634	40053	47281	56671	73808	99360	163336
Employment income	1288	6793	11199	16419	21994	26897	34849	46472	73199	131421
Pensions, benefits, scholarships	4507	6926	7240	9347	11929	12533	12317	11559	8985	10506
Income from sales of agricultural products	989	1383	3046	2615	2507	2115	1631	3334	5525	6465
Transfers, of which:	563	1236	1798	2452	2526	4425	6099	9871	8297	12148
From relatives residing in Armenia	158	163	174	309	140	491	666	1094	557	1363
From relatives residing outside of Armenia	387	1073	1602	2142	2385	3932	5422	8774	7733	10785
Other income	2002	2172	2107	1801	1097	1311	1775	2572	3354	2796

2017	Decile groups of monetary income									
	I	II	III	IV	V	VI	VII	VIII	IX	X
Household monetary income; including	10 209	20 967	28 609	35 392	41 798	49 118	58 854	72 974	95 679	172 413
Employment income	1 724	8 703	14 962	19 326	23 242	28 400	36 884	48 923	67 554	128 940
Pensions, benefits, scholarships	5 292	7 263	8 006	9 977	12 680	12 959	12 140	10 161	11 099	9 856
Income from sales of agricultural products	1 049	2 041	2 311	1 720	1 631	1 706	3 497	3 736	5 088	12 211
Transfers, of which:	526	1 349	2 105	2 388	3 067	4 440	5 279	8 470	9 910	18 223
From relatives residing in Armenia	137	198	217	199	505	497	532	1157	1031	1238
From relatives residing outside of Armenia	384	1 151	1 888	2 189	2562	3943	4746	7313	8 879	16 985
Other income	1 618	1 611	1 225	1 981	1 178	1 613	1 054	1 684	2 028	3 183

2018	Decile groups of monetary income									
	I	II	III	IV	V	VI	VII	VIII	IX	X
Household monetary income; including	12 062	21 554	29 080	36 244	44 038	52 029	62 563	74 390	93 666	185 525
Employment income	2 447	7 960	14 588	20 201	24 540	29 785	39 081	50 189	65 358	137 929
Pensions, benefits, scholarships	4 718	7 683	7 756	8 485	12 579	13 543	12 439	11 668	11 571	9 180
Income from sales of agricultural products	2 645	2 734	3 205	2 262	1 915	2 460	3 026	3 912	4 991	17 965
Transfers, of which:	727	1 665	2 199	4 099	3 795	4 851	6 545	7 264	9 884	16 176
From relatives residing in Armenia	77	127	251	517	776	393	1 055	1 028	1 234	1 201
From relatives residing outside of Armenia	650	1 538	1 948	3 582	3 019	4 458	5 490	6 236	8 650	14 975
Other income	1 525	1 512	1 332	1 197	1 209	1 390	1 472	1 357	1 862	4 275

Source: *ILCS 2004, 2008-2018*

Note: *Excluding households, which did not report their income

State transfers are a key source of monetary income for households in the first decile group (39.1% in 2018), while the share of this source of income for households in the tenth decile group (5.0%) is small (Table 6.4 and Graph 6.1).

The share of private transfers is the largest in the composition of monetary household income for the fourth decile group (11.3%). In comparison with 2004, the share of this source of income in 2018 increased in the composition of monetary household income for the second, third, fifth and sixth decile groups and decreased for all other decile groups. The share of this income source indicated for the first decile group is about 1.7 times lower than this share for households in the tenth decile (5.2% u 8.7% respectively).

It should be mentioned that in 2018 the share of private transfers in the composition of monetary household income for the tenth decile group has decreased by around 2.2 times compared to 2004 (from 19% to 8.7%).

**Table 6.4 – Armenia: Structure of Monetary Income, by Decile Groups,
2004, 2008-2018
(Average Monthly per Capita Income)**

(Percent)

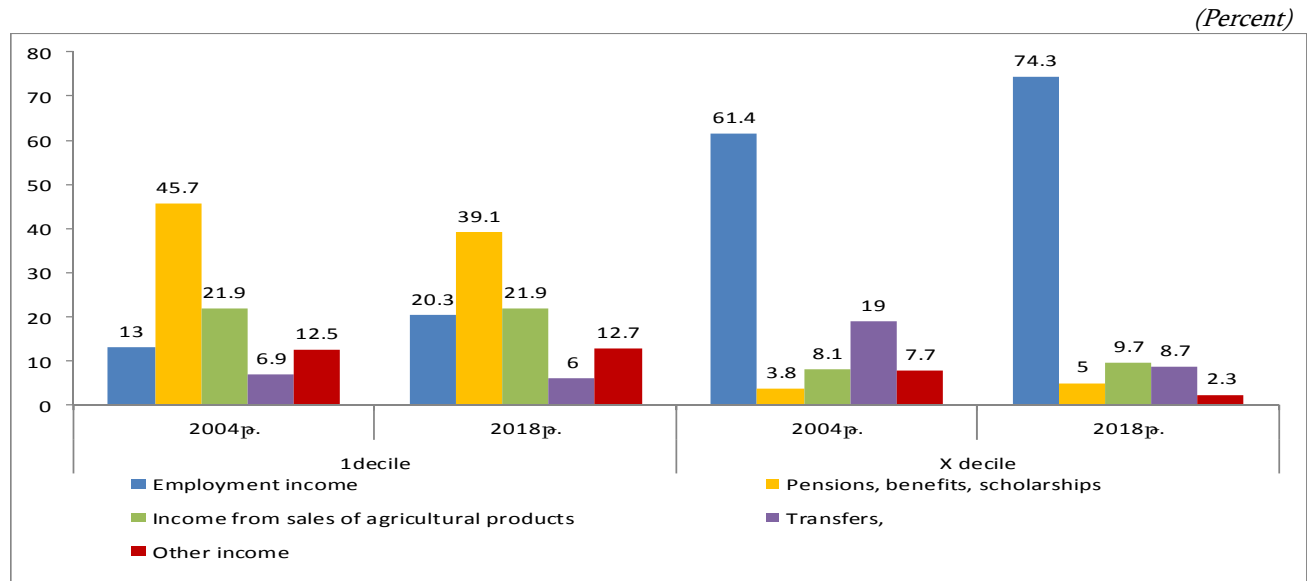
Decile groups of monetary income	Years	Monetary income	Including							Other income
			Employment income	Pensions, benefits, scholarships	Income from sales of agricultural products	Transfers	Of which			
							From relatives residing in Armenia	From relatives residing outside of Armenia		
I	2004	100	13	45.7	21.9	6.9	3.2	3.7	12.5	
	2008	100	13	48.7	15	10.5	3.1	7.3	12.8	
	2009	100	8.5	51.5	14.5	6	1.9	4.1	19.6	
	2010	100	11.5	52.2	9.2	6	2.1	3.9	21.1	
	2011	100	11.8	48.1	15.4	4.8	1.5	3.3	19.9	
	2012	100	14.5	53.2	14.6	3.1	0.8	2.3	14.6	
	2013	100	14.0	49.7	12.2	5.4	1.2	4.2	18.7	
	2014	100	19.3	49.2	9.9	3.8	0.5	3.3	17.8	
	2015	100	12.4	48.0	12.0	5.1	0.8	4.3	22.5	
	2016	100	13.8	48.2	10.6	6.0	1.6	4.1	21.4	
2017	100	16.9	51.8	10.3	5.2	1.4	3.8	15.8		
2018	100	20.3	39.1	21.9	6.0	0.6	5.4	12.7		
II	2004	100	21.8	42.6	18.4	4.3	1.9	2.2	12.9	
	2008	100	30.8	40.9	16.6	6.2	1.3	4.8	5.5	
	2009	100	25.0	48.0	8.9	4.9	1.2	3.7	13.2	
	2010	100	24.8	44.4	10.2	6.4	1.8	4.5	14.2	
	2011	100	30.0	41.7	10.5	4.7	0.6	4.1	13.1	
	2012	100	32.9	43.1	10.7	4.7	0.6	4.0	8.6	
	2013	100	39.5	33.5	8.7	7.2	1.2	5.8	11.1	
	2014	100	35.1	37.7	8.8	7.9	0.8	7.0	10.5	
	2015	100	35.3	35.9	12.8	5.8	1.3	4.4	10.2	
	2016	100	36.7	37.4	7.5	6.7	0.9	5.8	11.7	
2017	100	41.5	34.6	9.8	6.4	0.9	5.5	7.7		
2018	100	36.9	35.7	12.7	7.7	0.6	7.1	7.0		
III	2004	100	32.8	35.1	14.7	7.2	2.5	4.6	10.2	
	2008	100	46.7	32.1	12.1	5.9	1	4.8	3.2	
	2009	100	41.7	33.3	10.4	7.7	1.8	5.9	6.9	
	2010	100	40.0	34.2	6.9	7.0	1.4	5.6	11.8	
	2011	100	43.2	31.7	8.7	7.0	1.5	5.5	9.4	
	2012	100	41.0	34.6	10.4	7.1	0.9	6.2	6.9	
	2013	100	45.1	30.9	11.6	5.7	0.4	5.3	6.7	
	2014	100	43.4	28.2	10.8	9.7	0.7	9.0	7.9	
	2015	100	47.4	28.2	10.4	6.5	0.9	5.6	7.5	
	2016	100	44.1	28.5	12.0	7.1	0.7	6.3	8.3	
2017	100	52.3	28.0	8.1	7.3	0.7	6.6	4.3		
2018	100	50.2	26.7	11.0	7.6	0.9	6.7	4.5		
IV	2004	100	42.2	26.1	16	7.4	2.4	4.7	8.3	
	2008	100	50.4	26.3	11.7	8.2	1.2	7	3.4	
	2009	100	53.6	25.7	6.9	6.4	1.4	5	7.5	
	2010	100	53.5	26.7	4.8	7.5	1.1	6.5	7.4	
	2011	100	52.8	28.1	6.4	7.3	2.1	5.2	5.4	
	2012	100	51.4	26.6	10.0	7.5	0.8	6.8	4.5	
	2013	100	50.9	26.5	8.6	9.3	2.1	7.2	4.7	
	2014	100	52.5	27.1	6.6	7.4	1.4	6.1	6.4	
	2015	100	54.7	25.7	6.5	7.6	1.6	5.9	5.5	
	2016	100	50.3	28.7	8.0	7.5	0.9	6.6	5.5	
2017	100	54.6	28.2	4.9	6.7	0.5	6.2	5.6		
2018	100	55.7	23.4	6.3	11.3	1.4	9.9	3.3		
V	2004	100	49.9	23.9	12.3	7.4	1.7	5.7	6.5	
	2008	100	52.4	24.6	10.4	10	1.6	8.4	2.6	
	2009	100	54.8	25.6	6.6	8.3	1.5	6.8	4.7	
	2010	100	58.1	22.7	3.6	10.1	1.6	8.5	5.4	
	2011	100	54.7	26.5	6.3	8.2	1.0	7.2	4.3	
	2012	100	54.4	28.0	6.8	6.5	0.7	5.7	4.3	
2013	100	54.2	25.0	7.8	6.8	0.8	6.0	6.2		

Decile groups of monetary income	Years	Monetary income	Including							Other income
			Employment income	Pensions, benefits, scholarships	Income from sales of agricultural products	Transfers	Of which			
							From relatives residing in Armenia	From relatives residing outside of Armenia		
	2014	100	54.3	27.3	4.4	9.3	1.4	7.9	4.7	
	2015	100	58.9	26.9	4.6	4.9	0.6	4.3	4.7	
	2016	100	54.9	29.8	6.3	6.3	0.3	6.0	2.7	
	2017	100	55.6	30.3	4.0	7.3	1.2	6.1	2.8	
	2018	100	55.7	28.6	4.4	8.6	1.8	6.8	2.7	
VI	2004	100	53.1	19.5	14.1	8.4	2.8	5.5	4.9	
	2008	100	57.6	23.5	6.7	8.9	2.1	6.8	3.3	
	2009	100	59.1	26.8	5.5	5.7	0.7	5	2.9	
	2010	100	58.2	25.1	4.4	7.6	0.7	6.9	4.7	
	2011	100	60.4	26	3.9	6.7	0.8	5.9	3	
	2012	100	56.1	27.1	5.2	9.2	1.4	7.9	2.4	
	2013	100	57.8	26.3	4.7	6.6	1.2	5.4	4.6	
	2014	100	54.5	25.7	4.0	11.2	1.5	9.7	4.6	
	2015	100	57.7	29.0	3.1	7.1	0.1	7.0	3.1	
	2016	100	56.9	26.5	4.5	9.3	1.0	8.3	2.8	
	2017	100	57.9	26.3	3.5	9.0	1.0	8.0	3.3	
2018	100	57.3	26.0	4.7	9.3	0.7	8.6	2.7		
VII	2004	100	56.5	15.3	12.4	11	2.3	8.6	4.8	
	2008	100	65.9	19.1	5	8.4	1.4	7	1.6	
	2009	100	63.2	21.1	3.2	9.7	1.4	8.3	2.8	
	2010	100	60.0	23.6	3.0	9.4	1.8	7.6	4	
	2011	100	60.9	20.4	4.6	10.8	1	9.8	3.3	
	2012	100	56.5	24.3	4.2	11.5	1.4	10.0	3.5	
	2013	100	61.3	21.4	3.6	10.0	1.4	8.6	3.7	
	2014	100	62.8	21.7	2.8	9.1	1.6	7.4	3.6	
	2015	100	61.1	22.5	3.8	7.8	0.7	7.1	4.8	
	2016	100	61.5	21.7	2.9	10.8	1.2	9.6	3.1	
	2017	100	62.7	20.6	5.9	9.0	0.9	8.1	1.8	
2018	100	62.4	19.9	4.8	10.5	1.7	8.8	2.4		
VIII	2004	100	64.3	11.5	10.4	10.4	1.8	8.6	3.4	
	2008	100	65.7	19.9	4.4	8.6	1.4	7.2	1.4	
	2009	100	62.4	17.4	5.7	9.9	0.9	9	4.6	
	2010	100	65.8	18.2	3.1	10.2	2.2	8	2.7	
	2011	100	64.2	18.5	4.1	10.1	1.1	9	3.1	
	2012	100	67.7	16.2	3.1	10.2	1.7	8.5	2.8	
	2013	100	64.3	15.9	4.6	11.7	1.2	10.5	3.5	
	2014	100	62.6	17.4	2.7	13.2	1.1	12.1	4.1	
	2015	100	63.9	18.3	3.2	11.9	1.5	10.4	2.7	
	2016	100	62.9	15.7	4.5	13.4	1.5	11.9	3.5	
	2017	100	67.0	14.0	5.1	11.6	1.6	10.0	2.3	
2018	100	67.5	15.7	5.2	9.8	1.4	8.4	1.8		
IX	2004	100	67.0	8.1	9.7	11.9	2.3	9.6	3.3	
	2008	100	72.4	10.8	4.0	11.1	1.8	9.3	1.7	
	2009	100	67.3	15.8	3.8	9.9	1.2	8.6	3.2	
	2010	100	72.4	12.6	2.9	10.5	1.7	8.8	1.6	
	2011	100	67.1	12.5	3.7	13.7	2.5	11.2	3.0	
	2012	100	70.6	12.3	2.8	13.0	1.5	11.5	1.3	
	2013	100	67.9	12.3	3.6	13.1	1.4	11.7	3.1	
	2014	100	67.6	11.1	5.0	13.5	1.7	11.9	2.8	
	2015	100	69.6	13.0	3.2	11.4	1.3	10.1	2.8	
	2016	100	73.6	9.0	5.6	8.4	0.6	7.8	3.4	
	2017	100	70.6	11.6	5.3	10.4	1.1	9.3	2.1	
2018	100	69.8	12.4	5.3	10.5	1.3	9.2	2.0		
X	2004	100	61.4	3.8	8.1	19	3.3	15.6	7.7	
	2008	100	72.7	8.2	4.5	12.6	1.9	10.7	1.9	
	2009	100	68.4	10.1	6.4	12.5	1.4	11.1	2.6	
	2010	100	64.3	7.7	2.7	20.6	1.4	19.2	4.7	
	2011	100	66.0	9.0	4.1	18.7	2.1	16.6	2.2	
	2012	100	66.1	6.6	5.9	13.6	1.3	12.3	7.8	
	2013	100	64.5	8.3	5.5	15.2	1.5	13.7	6.5	
	2014	100	68.7	5.2	6.2	15.8	1.4	14.4	4.1	

Decile groups of monetary income	Years	Monetary income	Including						Other income
			Employment income	Pensions, benefits, scholarships	Income from sales of agricultural products	Transfers	Of which		
							From relatives residing in Armenia	From relatives residing outside of Armenia	
	2015	100	76.4	6.4	5.3	9.8	0.7	9.1	2.1
	2016	100	80.5	6.4	4.0	7.4	0.8	6.6	1.7
	2017	100	74.8	5.7	7.1	10.6	0.7	9.9	1.8
	2018	100	74.3	5.0	9.7	8.7	0.6	8.1	2.3

Source: *ILCS 2004-2018*

Graph 6.1 – Armenia: Structure of Monetary Income for Households of the First and the Tenth Decile Groups, 2004 and 2018 (Average Monthly per Capita Income)



Source: *ILCS 2004 and 2018*

6.2. Household Consumption Expenditure

Gross household consumption expenditures are another indicator of household material and monetary welfare. Gross household consumption expenditures comprise monetary and non-monetary consumption expenditures.

Gross household consumption expenditures include the payments made by households within the reporting period to acquire food products (including the expenses on food consumed away from home, own production food consumed (used) by the household and food received free of charge from relatives or third persons, all expressed in monetary terms) and non-food products (including expenses on durable goods) and services, as well as non-food products and services received free of charge from relatives or third persons, all expressed in monetary terms.

Household consumption expenditures do not include taxes, collections, debt repayments, alimony payments, assistance to relatives, penalties, loan repayments and other non-consumption expenditures, accumulations, as well as expenses related to production activities of households (acquisition of seeds, livestock, raw materials).

ARMSTAT has used the “*Classification of Individual Consumption by Purpose*” (as approved by the Order of the Minister of Economy No. 161-N of February 21, 2012) since 2012, the “*Classification of Individual Consumption by Purpose*” (as approved by the Order of the Minister of Economy No. 876-N of September 19, 2013) since 2013, and the revised version of the “*Classification of Individual Consumption by Purpose*” (as approved by the Order of the Minister of Economy No. 513-N of June 2, 2014) since 2014 (see http://www.arlis.am/Annexes/4/GT15_14page69-209.doc).

This chapter presents data on household consumption expenditures by COICOP applied before 2012 under sub-section 6.2.1 (to provide for the consistency of time series), and by COICOP classifier revised in 2014 under sub-section 6.2.2.

6.2.1. Household Consumption Expenditures by COICOP Classifier Applied Before 2012

Household consumption expenditures by COICOP classifier applied before 2012 include:

Food products

- Meat and meat products
- Milk and milk products
- Eggs
- Fish and fish products
- Sugar and confectionary
- Butter and vegetable oils
- Potato
- Vegetable crops
- Fruits, berries, nuts, and grape
- Bread and bakery goods
- Other food
- Food consumed away from home

Alcoholic beverages

Tobacco

Non-food products

- Clothing, textile, footwear
- Furniture, carpets, home appliances
- Hygiene items and medicaments
- Means of transportation, spare parts and fuel
- Other non-food products

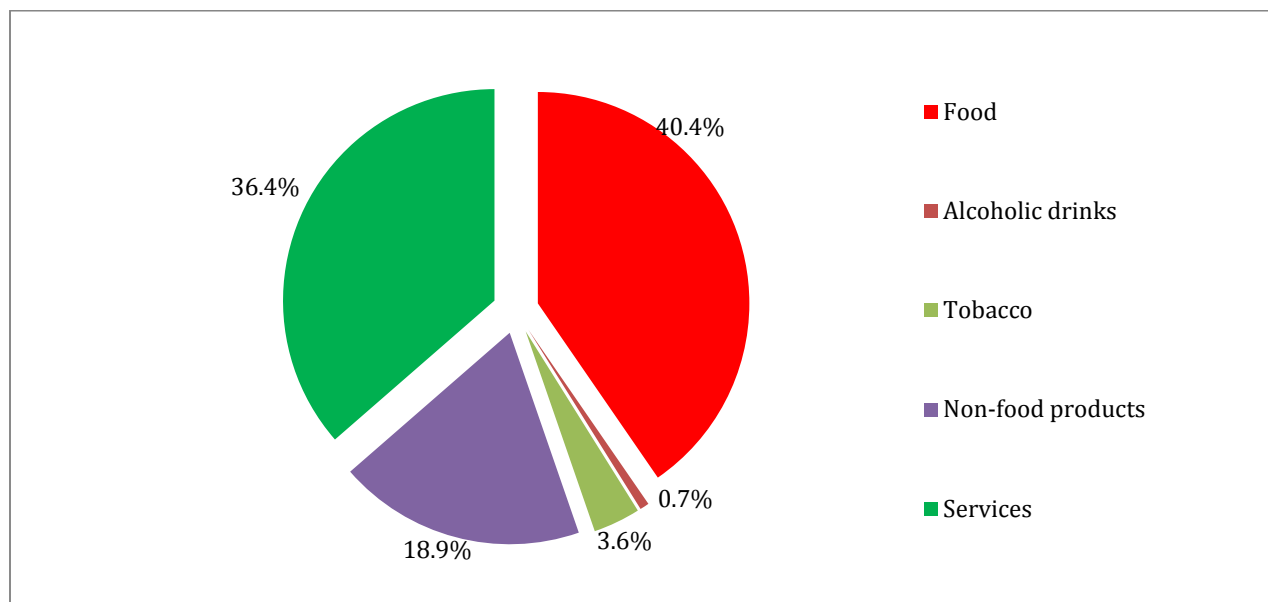
Services

- Housing and utilities (excluded phone)
- Culture, recreation, and sports
- Education, training, and preschool education
- Medicine and resort
- Transport and communications
- Other services

The structure of household consumption expenditures in 2018 is presented in Graph 6.2. According to available data, the share of expenses on food within consumption expenditures of the population have decreased from 56.1% in 2004 to 40.4% in 2018 (Table 6.5).

Graph 6.2 – Armenia: Structure of Household Consumption Expenditures, 2018
(Average Monthly per Capita Expenditures)

(Percent)



Source: *ILCS 2018*

Changes in the structure of household nominal consumption expenditures as per 2004, 2008 and 2016-2018 survey results are presented in the table below.

Table 6.5 – Armenia: Structure of Household Nominal Consumption Expenditures, 2004, 2008 and 2016-2018

Expenditure items	Average monthly per capita expenditures									
	AMD					AMD				
	2004	2008	2016	2017	2018	2004	2008	2016	2017	2018
Consumption expenditure, including	19251	28878	43978	44413	45788	100	100	100	100	100
Food; of which	10797	14984	18520	18446	18496	56.1	51.9	42.1	41.5	40.4
Food consumed away from home	227	449	896	481	424	1.2	1.6	2.0	1.1	0.9
Alcoholic beverages	163	227	244	321	322	0.8	0.8	0.6	0.7	0.7
Tobacco	808	1019	1351	1649	1653	4.2	3.5	3.0	3.7	3.6
Non-food products	2787	4730	8732	8497	8644	14.5	16.4	19.9	19.2	18.9
Services; including	4696	7918	15131	15500	16673	24.4	27.4	34.4	34.9	36.4
Health care	1500	1035	2308	2490	2770	7.8	3.6	5.2	5.6	6.0
Education	708	1221	663	1047	1255	3.7	4.2	1.5	2.4	2.7
Utilities	1146	2635	6148	6495	6962	6.0	9.1	14.0	14.6	15.2
Transport	694	967	1570	1461	1521	3.6	3.3	3.6	3.3	3.3
Communications	291	1404	2438	1921	1994	1.5	4.9	5.5	4.3	4.4
Culture	3	3	196	98	121	0.0	0.0	0.5	0.2	0.3
Legal services	3	16	447	518	548	0.0	0.1	1.0	1.2	1.2
Other services	351	637	1361	1470	1502	1.8	2.2	3.1	3.3	3.3

Source: *ILCS 2004, 2008 and 2016-2018*

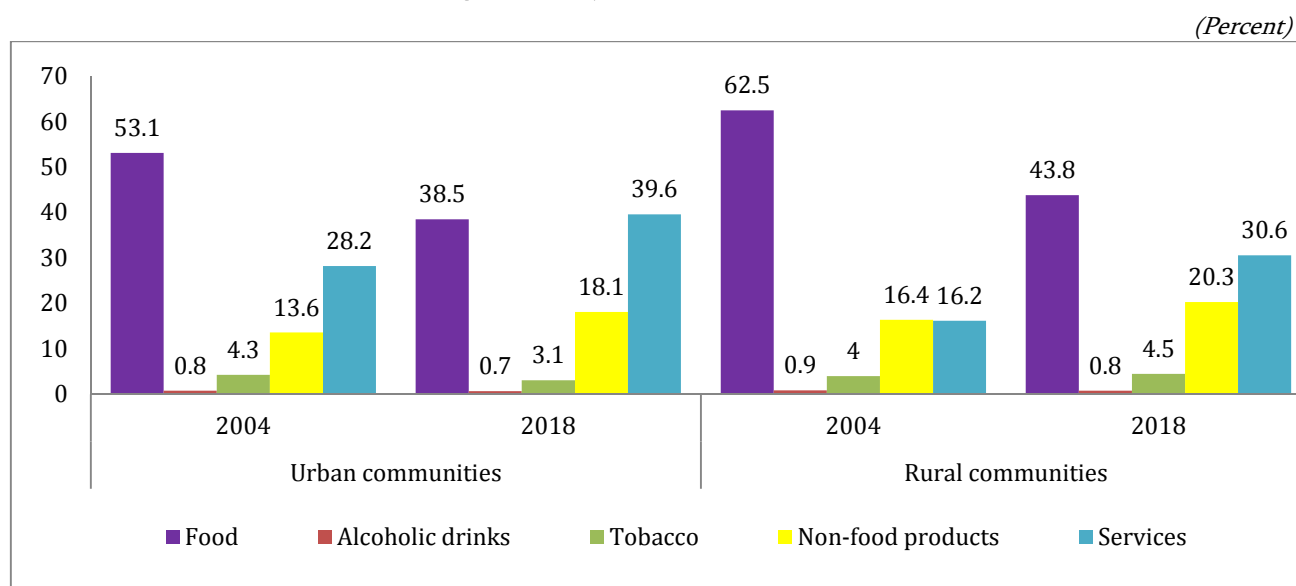
In 2018, consumption of almost all types of food decreased, as a reflection of increasing consumer price index over the previous year (by 2.3%). The share of expenses on food was still relatively large in total consumption expenditures of rural households compared to that of urban households. At the same time, the share of expenses on food in rural communities decreased from 62.5% in 2004 to 43.8% in 2018, whereas the share of expenses on services for both urban and rural households, particularly those on utilities and legal services certainly increased. The share of expenses on utilities in total expenditures was larger for urban population than that for rural population. The share of expenses on non-food products in consumption expenditures was larger for rural population than that for urban population (20.3% and 18.1%, respectively). As to expenses on healthcare services, their share decreased for both urban and rural households from 8.6% to 6.2% and from 6.1% to 5.7%, respectively (Table 6.6 and Graph 6.3).

Table 6.6 – Armenia: Structure of Household Nominal Consumption Expenditures, by Urban and Rural Communities, 2004 and 2018
(Average Monthly per Capita Expenditures)

Expenditure items	Urban communities				Rural communities			
	AMD		Percent		AMD		Percent	
	2004	2018	2004	2018	2004	2018	2004	2018
Consumption expenditure; including	20933	47535	100	100	16458	42905	100	100
Food; of which	11109	18314	53.1	38.5	10281	18793	62.5	43.8
Food consumed away from home	321	565	1.5	1.2	72	193	0.4	0.5
Alcoholic beverages	173	306	0.8	0.7	146	350	0.9	0.8
Tobacco	894	1494	4.3	3.1	666	1916	4	4.5
Non-food products	2841	8615	13.6	18.1	2695	8692	16.4	20.3
Services; including	5916	18806	28.2	39.6	2670	13154	16.2	30.6
Health care	1794	2966	8.6	6.2	1012	2448	6.1	5.7
Education	976	1477	4.7	3.1	265	889	1.6	2.1
Utilities	1382	8288	6.6	17.5	755	4774	4.6	11.1
Transport	929	1625	4.4	3.4	303	1348	1.8	3.1
Communication	421	2265	2	4.8	75	1546	0.5	3.6
Culture	4	119	0.0	0.3	0	125	0	0.3
Legal services	4	438	0	0.9	0	730	0	1.7
Other services	406	1628	1.9	3.4	260	1294	1.6	3.0

Source: *ILCS 2004 and 2018*

Graph 6.3 – Armenia: Structure of Household Nominal Consumption Expenditures, by Urban and Rural Communities, 2004 and 2018
(Average Monthly per Capita Expenditures)



Source: *ILCS 2004 and 2018*

A more detailed breakdown of household consumption expenditures over the period of 2008-2018 by urban and rural communities is presented in Annex 3, Table A6.1.

6.2.2. Household Consumption Expenditures by COICOP Classifier Revised in 2014

Consumption expenditures of households by COICOP classifier revised in 2014 include:

1. Food and non-alcoholic beverages;
2. Alcoholic beverages and tobacco;
3. Clothing and footwear;
4. Housing services, water, electricity, gas and other types of fuel;
5. Furnishings, household equipment and routine household maintenance;
6. Health;
7. Transport;
8. Communications;
9. Recreation and culture;
10. Education
11. Hotels, café and restaurants;
12. Miscellaneous goods and services.

Table 6.7 – Armenia: Structure of Household Nominal Consumption Expenditures, 2016-2018
(Average Monthly per Capita Expenditures, Grouped by Purpose¹⁾)

(AMD)

Expenditure items	Country total		Including			
			Urban communities		Rural communities	
	2016	2018	2016	2018	2016	2018
Consumption expenditure; including	43978	45788	46519	47535	39539	42905
Food and non-alcoholic beverages	17624	18071	17183	17750	18396	18600
Alcoholic beverages and tobacco	1595	1975	1550	1800	1674	2265
Clothing and footwear	1887	1661	1589	1339	2409	2191
Housing services, water, electricity, gas and other types of fuel	8195	7220	9211	8421	6416	5238
Furnishings, household equipment and routine household maintenance	1565	1459	1567	1436	1560	1496
Health	4277	4770	5251	5269	2575	3946
Transport	1803	3630	2169	3704	1165	3508
Communications	2389	1955	2635	2208	1959	1539
Recreation and culture	1049	1038	1021	1217	1098	743
Education	664	1254	811	1475	406	888
Hotels, café and restaurants	943	575	1423	677	103	407
Other services	1987	2180	2109	2239	1775	2084

Source: ILCS 2017 and 2018

¹⁾ Grouped under the National Classifier of Individual Consumption by Purpose, harmonized with the European Union's "Classification of Individual Consumption by Purpose" (COICOP HBS).

Table 6.8 – Armenia: Structure of Household Nominal Consumption Expenditures, 2016-2018
(Average Monthly per Capita Expenditures, Grouped by Purpose¹⁾)

(Percent)

Expenditure items	Country total		Including			
			Urban communities		Rural communities	
	2016	2018	2016	2018	2016	2018
Consumption expenditure; including	100	100	100	100	100	100
Food and non-alcoholic beverages	40.1	39.5	36.9	37.3	46.5	43.4
Alcoholic beverages and tobacco	3.6	4.3	3.3	3.8	4.2	5.3
Clothing and footwear	4.3	3.6	3.4	2.8	6.1	5.1
Housing services, water, electricity, gas and other types of fuel	18.6	15.8	19.8	17.7	16.2	12.2
Furnishings, household equipment and routine household maintenance	3.6	3.2	3.4	3.0	4.0	3.5
Health	9.8	10.4	11.3	11.1	6.5	9.2
Transport	4.1	7.9	4.7	7.8	2.9	8.2
Communications	5.4	4.3	5.7	4.7	5.0	3.6
Recreation and culture	2.4	2.3	2.2	2.6	2.8	1.7
Education	1.5	2.7	1.7	3.1	1.0	2.1
Hotels, café and restaurants	2.1	1.3	3.1	1.4	0.3	0.9
Other services	4.5	4.7	4.5	4.7	4.5	4.8

Source: ILCS 2017 and 2018

¹⁾ Grouped under the National Classifier of Individual Consumption by Purpose, harmonized with the European Union's "Classification of Individual Consumption by Purpose" (COICOP HBS).

6.3. Assessment of Inequality in Income and Expenditure Distribution

Household expenditure indicators are more reliable as compared with income data, since respondents often do not report or underreport their income (due to the propensity to non-disclosure of income).

The ratio of “polar” quintiles is calculated to distinguish the population by income and expenditures; this is the ratio of income or expenditures of the best-off 20% population to that of the most vulnerable 20% population. According to that assessment, the ratio of monetary income of the best-off 20% and the most vulnerable 20% decreased in 2018 as compared to 2004, from 10.6 to 8.3 times, while the reduction in terms of consumption expenditures was from 5.8 to 5.6 times (Table 6.9).

Table 6.9 – Armenia: Ratio of Income and Expenditures of 20 Percent Wealthiest and 20 Percent Poorest Population, 2004 and 2008-2018

	2004	2008	2009	2010	2011	2012	2013	2014	2015	2016	2017	2018
By monetary income	10.6	7.8	8.0	8.0	8.0	8.5	8.2	8.8	8.4	9.4	8.5	8.3
By consumption expenditures	5.8	5.2	5.1	5.2	5.4	5.2	5.2	5.6	5.6	5.4	5.9	5.6

(Times)

Source: *ILCS 2004, 2008-2018*

Table 6.10 – Armenia: Ratio of Income and Expenditures of 10 Percent Wealthiest and 10 Percent Poorest Population, 2004 and 2008-2018

	2004	2008	2009	2010	2011	2012	2013	2014	2015	2016	2017	2018
By monetary income	20.8	14.1	14.5	14.2	14.8	15.9	15.0	16.6	16.4	17.5	16.8	15.4
By consumption expenditures	9.5	8.0	7.9	8.1	8.5	8.2	8.2	9.1	9.0	8.3	9.8	9.4

(Times)

Source: *ILCS 2004, 2008-2018*

The ratio of the “polar” deciles of population by income or expenditure (i.e. the ratio of income or expenditures of the best-off 10% population to that of the most vulnerable 10% population) is more distinct, than the quintile ratio. In 2018, this ratio constituted 9.4 times for consumption expenditures and 15.4 times for monetary income of population.

Analysis of the Gini coefficient, which is the main indicator of inequality in terms of the distribution of income and expenditure among population, is presented in Chapter 3 of this report.

Table A6.2 of Annex 3 presents the change in the structure of average monthly per capita household consumption expenditures by decile groups over the period of 2004-2018.

As expected, for poor households the share of expenses on food in total consumption expenditures was larger than the country average. Over the reporting period of 2004-2018, expenses on services incurred by households within the first decile group doubled (Graph 6.4 and Table 6.11). Households in the tenth decile used more services and acquired more non-food products as compared to the households in the first decile.

Table 6.11 – Armenia: Structure of Household Consumption Expenditures, by Decile Groups, 2004, 2008-2018 (Average Monthly per Capita Expenditures)

(Percent)

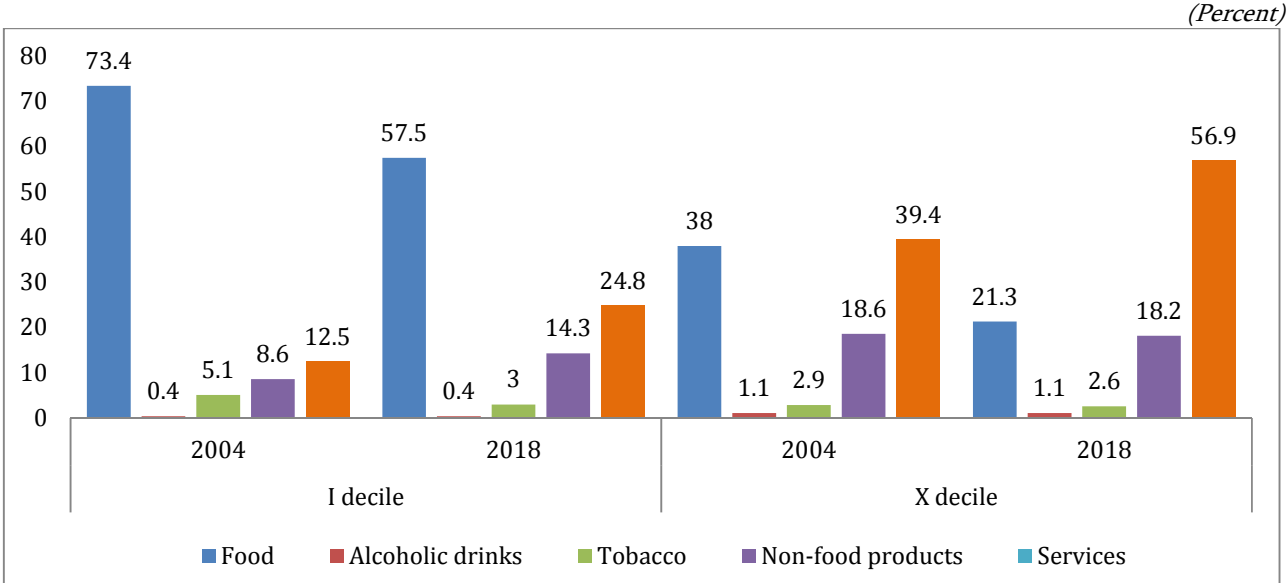
Decile groups of consumption expenditures	Year	Consumption expenditures	Including				
			Food*	Alcoholic beverages	Tobacco	Non-food products	Services
I	2004	100	73.4	0.4	5.1	8.6	12.5
	2008	100	67.4	0.4	4.5	7.3	20.4
	2009	100	63.6	0.2	5.1	7.7	23.4
	2010	100	64.6	0.3	3.9	8.5	22.7
	2011	100	62.9	0.3	4.4	8.2	24.2
	2012	100	63.2	0.3	4.3	7.8	24.4
	2013	100	62.0	0.2	4.7	8.7	24.4
	2014	100	60.0	0.2	3.4	10.5	25.9
	2015	100	60.2	0.2	4.0	10.8	24.8
	2016	100	60.2	0.2	3.3	12.2	24.1
	2017	100	56.9	0.2	3.2	12.6	27.1
2018	100	57.5	0.4	3.0	14.3	24.8	
II	2004	100	71.4	0.4	4.7	10.2	13.3
	2008	100	66.3	0.4	4.0	8.2	21.1
	2009	100	63.1	0.3	4.1	9.2	23.3
	2010	100	63.5	0.3	4.2	9.3	22.7
	2011	100	62.9	0.4	4.6	9.1	23.0
	2012	100	60.0	0.3	4.1	11.6	25.0
	2013	100	59.3	0.3	4.4	11.7	24.3
	2014	100	57.4	0.3	4.5	13.1	24.7
	2015	100	57.9	0.3	4.7	12.3	24.8
	2016	100	55.6	0.3	3.8	14.1	26.2
	2017	100	55.6	0.2	4.5	14.2	25.5
2018	100	57.0	0.4	3.4	14.9	24.3	
III	2004	100	71.7	0.6	5.1	8.9	13.7
	2008	100	62.8	0.4	4.4	9.4	23.0
	2009	100	61.0	0.4	4.7	10.6	23.3
	2010	100	61.6	0.5	4.3	11.1	22.5
	2011	100	61.7	0.4	4.0	10.9	23.0
	2012	100	57.8	0.3	4.4	13.1	24.4
	2013	100	56.9	0.4	4.9	14.0	23.8
	2014	100	57.4	0.4	3.6	13.8	24.8
	2015	100	58.1	0.4	3.4	13.2	24.9
	2016	100	57.3	0.4	4.3	12.9	25.1
	2017	100	55.0	0.3	4.0	15.3	25.4
2018	100	55.0	0.3	4.0	16.2	24.4	
IV	2004	100	69.5	0.4	5.3	10.7	14.1
	2008	100	60.4	0.6	4.1	11.1	23.8
	2009	100	59.6	0.5	4.7	11.7	23.5
	2010	100	60.7	0.6	4.1	11.5	23.1
	2011	100	60.6	0.3	4.5	11.8	22.8
	2012	100	56.4	0.3	3.9	14.0	25.4
	2013	100	57.4	0.3	4.4	14.5	23.4
	2014	100	56.0	0.3	3.9	14.6	25.2
	2015	100	54.0	0.3	4.7	16.4	24.6
	2016	100	53.4	0.4	4.0	15.7	26.5
	2017	100	54.7	0.4	4.2	15.8	24.9
2018	100	52.0	0.4	3.3	17.1	27.1	
V	2004	100	66.6	0.6	5.2	11.5	16.1
	2008	100	57.5	0.6	4.7	12.2	25.0
	2009	100	58.2	0.6	5.0	12.1	24.1
	2010	100	59.2	0.6	4.1	12.0	24.1
	2011	100	58.6	0.4	4.3	12.0	24.7
	2012	100	54.6	0.4	4.1	15.1	25.8
	2013	100	54.7	0.4	4.1	16.9	23.9
	2014	100	53.0	0.3	4.2	16.0	26.5
	2015	100	52.6	0.3	4.1	17.1	25.9
	2016	100	49.2	0.4	4.0	17.5	28.9
2017	100	51.9	0.4	3.7	18.2	25.8	

Decile groups of consumption expenditures	Year	Consumption expenditures	Including				
			Food*	Alcoholic beverages	Tobacco	Non-food products	Services
	2018	100	51.7	0.4	4.2	17.8	26.0
VI	2004	100	64.1	0.7	4.9	12.5	17.8
	2008	100	57.1	0.5	3.9	13.5	25.0
	2009	100	55.1	0.7	4.5	12.9	26.8
	2010	100	57.4	0.6	4.4	13.7	23.9
	2011	100	59.7	0.5	3.6	13.5	22.7
	2012	100	53.6	0.5	3.6	17.8	24.5
	2013	100	52.6	0.4	4.5	17.2	25.3
	2014	100	51.9	0.5	4.0	17.6	26.0
	2015	100	48.7	0.5	4.0	19.6	27.2
	2016	100	48.6	0.5	3.8	18.3	28.8
	2017	100	49.8	0.4	4.0	18.5	27.3
	2018	100	50.3	0.4	4.2	19.3	25.8
VII	2004	100	61.7	0.8	4.5	13.9	19.1
	2008	100	55.3	0.6	3.5	16.0	24.6
	2009	100	54.7	0.9	3.8	15.3	25.3
	2010	100	55.3	0.7	4.3	14.6	25.1
	2011	100	58.1	0.8	4.1	13.8	23.2
	2012	100	53.0	0.6	3.3	17.0	26.1
	2013	100	51.2	0.4	4.4	17.2	26.8
	2014	100	50.0	0.5	4.2	18.9	26.4
	2015	100	49.1	0.5	3.7	18.9	27.8
	2016	100	45.0	0.5	3.7	20.3	30.5
	2017	100	48.7	0.6	3.7	19.4	27.6
	2018	100	47.0	0.6	4.6	20.9	26.9
VIII	2004	100	59.3	0.9	4.8	13.7	21.3
	2008	100	52.5	0.9	3.9	16.6	26.1
	2009	100	51.5	0.9	3.9	17.0	26.7
	2010	100	54.8	0.9	3.7	15.8	24.8
	2011	100	56.3	0.7	3.6	15.1	24.3
	2012	100	51.0	0.8	3.9	17.3	27.0
	2013	100	50.6	0.8	3.3	18.3	27.0
	2014	100	48.3	0.6	3.6	19.3	28.2
	2015	100	46.3	0.6	3.8	20.5	28.8
	2016	100	38.6	0.4	3.4	24.7	32.9
	2017	100	45.8	0.6	3.3	20.7	29.6
	2018	100	44.5	0.6	4.7	22.2	28.0
IX	2004	100	55.1	1.0	4.0	16.3	23.6
	2008	100	47.3	0.8	3.2	19.1	29.6
	2009	100	49.2	1.1	3.3	17.2	29.2
	2010	100	52.1	1.4	3.7	17.2	25.6
	2011	100	53.0	1.1	3.4	15.5	27.0
	2012	100	48.2	0.7	3.3	18.7	29.1
	2013	100	46.5	0.8	3.1	21.4	28.2
	2014	100	45.9	0.7	3.1	20.0	30.3
	2015	100	44.5	0.7	3.7	20.1	31.0
	2016	100	36.8	0.7	2.6	22.2	37.7
	2017	100	40.4	0.7	3.0	22.4	33.5
	2018	100	42.9	0.8	4.2	21.2	30.9
X	2004	100	38.0	1.1	2.9	18.6	39.4
	2008	100	40.1	1.2	2.6	22.6	33.5
	2009	100	38.9	1.2	2.5	20.1	37.3
	2010	100	38.3	1.4	2.3	20.1	37.9
	2011	100	39.0	1.0	2.2	21.1	36.7
	2012	100	36.2	1.1	2.5	22.3	37.9
	2013	100	34.7	1.0	2.1	20.3	41.9
	2014	100	30.7	0.9	2.5	20.6	45.3
	2015	100	27.2	0.7	1.7	21.3	49.1
	2016	100	31.1	0.8	1.8	21.7	44.6
	2017	100	25.1	1.2	3.9	20.1	49.7
	2018	100	21.3	1.1	2.6	18.2	56.9

Source: ILCS 2004, 2008-2018

Note: *Including consumption cost of own production food

Graph 6.4 – Armenia: Structure of Nominal Consumption Expenditures for Households of the First and the Tenth Decile Groups, 2004 and 2018 (Average Monthly per Capita Expenditures)



Source: ILCS 2004 and 2018

Note: *Including consumption cost of own production food

The differences in consumption are clearly demonstrated when expenditures on **energy resources** are examined as to the distribution of **consumption expenditures** by decile groups. Hence, in 2018 the average monthly per capita spending on natural gas by the first decile group constituted AMD 909 and that by the tenth decile group – AMD 7915; whereas the spending on electricity by these decile groups equaled AMD 1260 and AMD 4677, respectively.

6.4. Household Consumption

Food consumption is one of the indicators describing the living conditions of population. The term “consumed food” refers to food products purchased, produced in the own household, or received as donation during the reporting period.

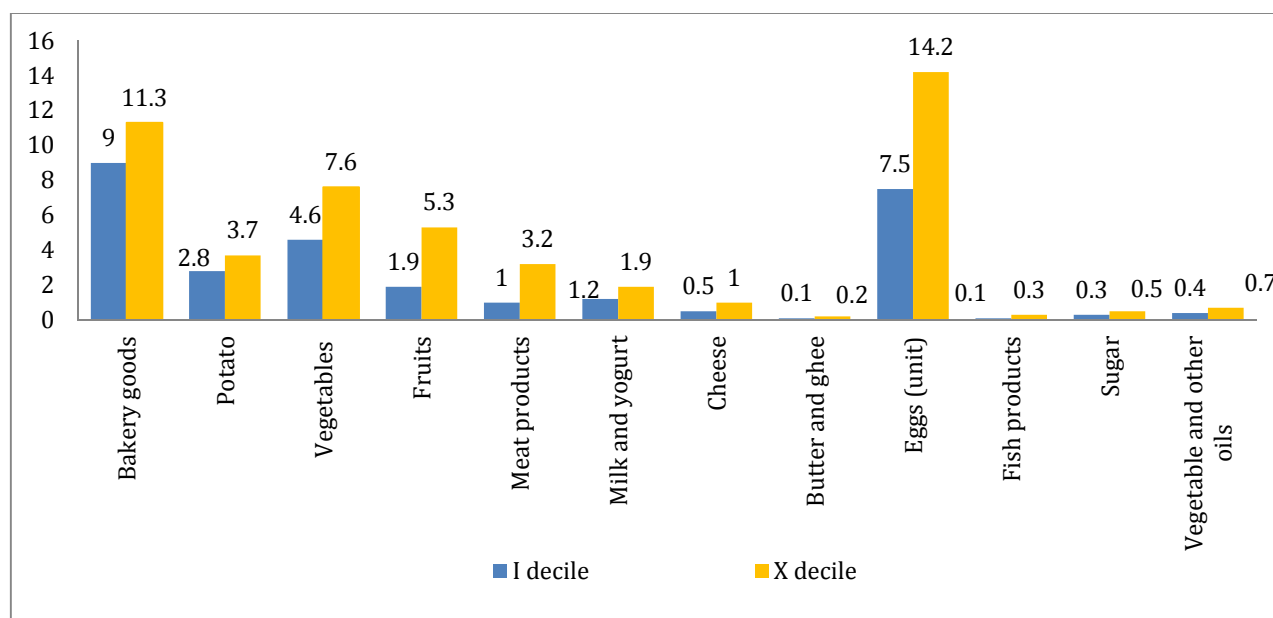
The consumption of food is grouped as follows:

- Bakery goods;
- Potato;
- Vegetables and vegetable crops;
- Fruit and berries (including dried fruit);
- Sugar;
- Meat and meat products;
- Fish products;
- Milk and yogurt;

- Eggs;
- Cheese;
- Butter and ghee;
- Vegetable and other oils.

The differences in consumption are clearly demonstrated when food consumption is examined as to the distribution of **consumption expenditures** by decile groups. Thus, in 2018 monthly per capita consumption of the tenth decile, as compared to that of the first decile, was higher 3 times for fish products, meat and meat products, 2.8 times for fruits, 2 times for butter, cheese and eggs, 1.6 times for vegetables and vegetable crops, as well as for milk and yogurt (Graph 6.5).

Graph 6.5 – Armenia: Consumption of Basic Food Products, by Consumption Expenditures of the First and the Tenth Decile Groups, 2018 (Average Monthly per Capita, Kilogram)



Source: *ILCS 2018*

The average monthly consumption of basic food products for 2004 and 2008-2018 by decile groups of consumption expenditures (on household per capita basis) is presented in Table 6.12.

Table 6.12 – Armenia: Consumption of Basic Food Products, by Decile Groups of Consumption Expenditures, 2004 and 2008-2018 (Average Monthly per Capita, Kilogram)

2004	Total	Decile groups of consumption expenditures									
		I	II	III	IV	V	VI	VII	VII	IX	X
Bakery goods	12.8	12.5	12.2	12.9	12.7	12.9	12.4	13.2	13.8	13.1	12.8
Potato	4.0	3.91	3.73	3.93	3.86	4.10	3.94	4.27	4.38	4.30	4.32
Vegetables and vegetable crops	5.3	3.7	4.3	4.8	5.1	5.7	5.4	6.2	6.3	6.4	6.3
Fruits and berries, including dried fruit	2.7	1.6	1.7	2.0	2.4	2.6	2.8	3.2	3.4	3.8	4.2
Meat and meat products	1.4	0.7	0.8	1.0	1.1	1.3	1.4	1.7	1.9	2.3	2.6

2004	Total	Decile groups of consumption expenditures									
		I	II	III	IV	V	VI	VII	VII	IX	X
Milk and yoghurt (liter)	1.9	1.3	1.6	2.0	1.9	1.9	2.0	2.2	2.4	2.1	1.9
Cheese	0.7	0.5	0.6	0.7	0.7	0.7	0.7	0.8	0.9	0.9	0.9
Butter and ghee	0.2	0.4	0.5	0.5	0.6	0.6	0.6	0.7	0.7	0.8	0.7
Eggs (piece)	8.5	5.2	6.4	7.8	8.2	8.8	8.7	9.7	10.9	10.9	11.7
Fish products	0.2	0.1	0.1	0.2	0.2	0.2	0.2	0.2	0.2	0.3	0.3
Sugar	0.6	0.5	0.5	0.5	0.6	0.6	0.6	0.7	0.7	0.6	0.6
Vegetable and other oils (liter)	0.3	0.3	0.3	0.3	0.3	0.3	0.3	0.3	0.3	0.3	0.3

2008	Total	Decile groups of consumption expenditures									
		I	II	III	IV	V	VI	VII	VII	IX	X
Bakery goods	12.7	11.5	11.8	12.2	12.5	13.2	13.5	13.4	13.1	12.9	13.0
Potato	3.9	3.3	3.5	3.6	3.8	4.0	3.9	4.1	4.2	4.2	4.2
Vegetables and vegetable crops	6.3	5.2	5.4	5.9	5.9	6.1	7.0	7.0	6.6	6.5	7.1
Fruits and berries, including dried fruit	3.9	2.0	2.5	2.7	3.4	3.8	4.8	4.8	4.9	5.0	5.1
Meat and meat products	2	1	1.2	1.3	1.6	1.8	2.1	2.2	2.5	2.8	3.5
Milk and yoghurt (liter)	1.7	1.3	1.4	1.6	1.6	1.8	1.9	2.0	1.9	1.8	1.9
Cheese	1.06	1.20	1.34	1.16	1.04	1.00	1.01	.97	.93	.94	1.01
Butter and ghee	0.4	0.2	0.3	0.3	0.3	0.4	0.4	0.4	0.5	0.5	0.5
Eggs (piece)	10.1	5.9	7.8	8.5	9.0	10.5	10.6	11.5	11.5	12.7	13.2
Fish products	0.2	0.0	0.1	0.1	0.1	0.2	0.2	0.2	0.2	0.2	0.3
Sugar	0.7	0.8	0.8	0.7	0.6	0.7	0.6	0.6	0.7	0.7	0.7
Vegetable and other oils (liter)	0.6	0.6	0.6	0.5	0.5	0.5	0.5	0.6	0.5	0.6	0.6

2009	Total	Decile groups of consumption expenditures									
		I	II	III	IV	V	VI	VII	VII	IX	X
Bakery goods	12.3	11.9	12.0	12.2	12.0	12.1	12.0	12.4	12.4	12.8	12.6
Potato	3.9	3.8	3.6	3.6	3.9	3.9	4.0	4.0	4.0	4.4	4.0
Vegetables and vegetable crops	6.1	4.3	4.8	5.2	5.9	6.4	6.1	6.6	6.9	7.0	7.4
Fruits and berries, including dried fruit	4.5	2.5	2.8	3.7	3.8	4.3	4.4	5.2	5.7	5.9	6.9
Meat and meat products	2.0	1.0	1.3	1.5	1.7	1.7	1.9	2.2	2.4	2.9	3.4
Milk and yoghurt (liter)	1.7	1.1	1.4	1.5	1.7	1.6	1.7	2.1	2.1	2.0	1.9
Cheese	1.0	0.7	0.8	0.9	1.0	1.0	1.1	1.1	1.2	1.2	1.2
Butter and ghee	0.4	0.2	0.2	0.3	0.3	0.3	0.4	0.4	0.4	0.5	0.5
Eggs (piece)	10.5	6.9	8.4	9.2	9.5	10.4	10.6	11.3	12.2	13.1	13.5
Fish products	0.2	0.1	0.1	0.1	0.1	0.1	0.2	0.2	0.2	0.2	0.3
Sugar	0.7	0.6	0.6	0.6	0.7	0.7	0.6	0.7	0.7	0.8	0.7
Vegetable and other oils (liter)	0.5	0.5	0.5	0.5	0.6	0.6	0.5	0.5	0.6	0.6	0.6

2010	Total	Decile groups of consumption expenditures									
		I	II	III	IV	V	VI	VII	VII	IX	X
Bakery goods	11.9	11.5	11.3	11.5	11.8	11.7	12.5	11.7	12.2	12.4	12.2
Potato	3.9	3.4	3.5	3.6	3.8	3.8	4.0	3.8	4.1	4.3	4.2
Vegetables and vegetable crops	5.7	3.8	4.7	5.0	5.4	5.9	6.1	6.0	6.6	6.7	7.0
Fruits and berries, including dried fruit	4.3	2.0	2.6	3.1	3.7	3.9	4.4	4.7	5.1	5.9	7.4
Meat and meat products	1.8	0.7	1.0	1.2	1.4	1.6	1.8	2.0	2.2	2.6	3.1
Milk and yoghurt (liter)	1.7	1.3	1.3	1.4	1.7	1.7	1.7	1.7	1.9	1.9	2.0

2010	Total	Decile groups of consumption expenditures									
		I	II	III	IV	V	VI	VII	VII	IX	X
Cheese	0.8	0.6	0.7	0.7	0.8	0.8	0.8	0.8	0.9	0.9	1.0
Butter and ghee	0.3	0.1	0.2	0.2	0.2	0.3	0.3	0.3	0.3	0.4	0.5
Eggs (piece)	11.1	7.2	9.1	9.9	10.9	11.2	12.0	11.6	12.6	12.9	13.2
Fish products	0.1	0.0	0.1	0.1	0.1	0.1	0.1	0.2	0.2	0.3	0.3
Sugar	0.6	0.5	0.5	0.5	0.6	0.6	0.6	0.6	0.7	0.7	0.7
Vegetable and other oils (liter)	0.5	0.5	0.5	0.5	0.5	0.5	0.6	0.5	0.6	0.6	0.6

2011	Total	Decile groups of consumption expenditures									
		I	II	III	IV	V	VI	VII	VII	IX	X
Bakery goods	12.2	11.1	11.2	11.4	11.7	12.0	12.7	13.0	13.2	13.1	12.6
Potato	3.6	2.8	3.1	3.2	3.4	3.4	3.9	4.0	4.0	4.2	4.3
Vegetables and vegetable crops	6.5	4.3	5.0	5.6	6.2	6.2	7.2	7.3	7.6	7.9	7.9
Fruits and berries, including dried fruit	4.0	1.9	2.5	2.8	3.4	3.5	4.1	4.7	5.1	5.5	6.8
Meat and meat products	1.8	1.0	1.2	1.3	1.5	1.6	1.8	2.1	2.0	2.4	2.9
Milk and yoghurt (liter)	1.7	1.0	1.4	1.3	1.6	1.7	1.8	1.9	2.0	1.9	2.0
Cheese	0.8	0.4	0.6	0.6	0.8	0.8	0.9	1.0	1.0	1.1	1.1
Butter and ghee	0.2	0.1	0.1	0.1	0.2	0.2	0.3	0.3	0.3	0.3	0.4
Eggs (piece)	11.2	7.4	8.3	9.3	10.3	10.6	12.0	13.0	13.5	13.6	14.6
Fish products	0.1	0.1	0.1	0.1	0.1	0.1	0.1	0.2	0.2	0.2	0.3
Sugar	0.6	0.5	0.5	0.6	0.6	0.6	0.6	0.7	0.7	0.8	0.7
Vegetable and other oils (liter)	0.6	0.5	0.5	0.5	0.6	0.6	0.6	0.6	0.6	0.6	0.6

2012	Total	Decile groups of consumption expenditures									
		I	II	III	IV	V	VI	VII	VII	IX	X
Bakery goods	12.2	10.6	10.7	10.8	11.4	11.8	12.3	12.9	13.1	13.7	14.5
Potato	3.6	2.9	3.1	3.3	3.3	3.4	3.6	3.8	3.9	4.1	4.1
Vegetables and vegetable crops	6.6	4.3	5.2	5.6	6.4	6.3	6.9	7.9	7.3	7.9	8.7
Fruits and berries, including dried fruit	4.2	1.4	2.4	2.5	3.1	3.8	4.5	5.2	5.3	6.1	7.7
Meat and meat products	1.9	1.0	1.3	1.3	1.5	1.7	1.9	2.2	2.4	2.6	3.3
Milk and yoghurt (liter)	1.5	1.0	1.1	1.2	1.4	1.5	1.6	1.7	1.8	2.0	2.0
Cheese	0.9	0.6	0.7	0.7	0.8	0.9	0.9	0.9	1.0	1.0	1.1
Butter and ghee	0.2	0.1	0.1	0.1	0.2	0.2	0.2	0.3	0.3	0.3	0.4
Eggs (piece)	10.8	7.1	8.1	9.2	10.2	10.5	11.3	11.7	12.8	13.0	14.5
Fish products	0.2	0.1	0.1	0.1	0.1	0.1	0.2	0.2	0.2	0.2	0.3
Sugar	0.6	0.6	0.5	0.5	0.5	0.5	0.6	0.6	0.6	0.6	0.7
Vegetable and other oils (liter)	0.4	0.3	0.3	0.3	0.4	0.4	0.4	0.4	0.4	0.4	0.4

2013	Total	Decile groups of consumption expenditures									
		I	II	III	IV	V	VI	VII	VII	IX	X
Bakery goods	11.8	10.9	10.5	10.8	11.3	11.6	11.7	12.2	12.5	13.0	13.7
Potato	3.5	3.0	3.2	3.3	3.6	3.6	3.5	3.6	3.8	3.9	4.1
Vegetables and vegetable crops	6.6	4.0	4.9	5.3	6.3	6.3	7.0	7.4	7.7	8.0	8.8
Fruits and berries, including dried fruit	3.9	1.2	2.0	2.5	2.8	3.5	3.9	4.9	5.2	5.9	6.9
Meat and meat products	1.9	0.8	1.2	1.4	1.6	1.6	2.0	2.2	2.4	2.6	3.3
Milk and yoghurt (liter)	1.5	0.8	1.2	1.2	1.5	1.5	1.6	1.8	1.8	1.9	1.8
Cheese	0.8	0.6	0.6	0.7	0.8	0.8	0.8	0.8	0.9	0.9	1.0

2013	Total	Decile groups of consumption expenditures									
		I	II	III	IV	V	VI	VII	VII	IX	X
Butter and ghee	0.3	0.1	0.2	0.2	0.2	0.2	0.3	0.3	0.3	0.3	0.4
Eggs (piece)	10.4	6.3	8.0	8.7	9.6	10.2	10.7	11.5	12.1	13.4	13.7
Fish products	0.2	0.1	0.1	0.1	0.1	0.2	0.2	0.2	0.2	0.3	0.3
Sugar	0.6	0.5	0.5	0.5	0.5	0.6	0.6	0.6	0.6	0.6	0.7
Vegetable and other oils (liter)	0.4	0.3	0.3	0.3	0.4	0.4	0.4	0.4	0.4	0.4	0.5

2014	Total	Decile groups of consumption expenditures									
		I	II	III	IV	V	VI	VII	VII	IX	X
Bakery goods	11.3	9.8	10.5	10.6	11.2	11.3	11.4	11.8	12.1	12.1	12.3
Potato	3.4	3.1	3.1	3.0	3.3	3.4	3.4	3.7	3.5	3.6	3.4
Vegetables and vegetable crops	6.4	4.3	4.8	5.7	6.0	6.4	6.7	7.3	8.0	4.5	7.7
Fruits and berries, including dried fruit	3.8	1.3	1.9	2.6	3.2	3.9	4.0	4.8	5.0	5.5	6.2
Meat and meat products	1.9	0.9	1.2	1.5	1.8	1.8	2.0	2.1	2.3	2.6	3.2
Milk and yoghurt (liter)	1.7	1.3	1.6	1.4	1.7	1.8	1.7	1.6	1.9	1.8	2.0
Cheese	0.8	0.6	0.7	0.7	0.8	0.8	0.8	0.9	0.9	0.9	1.0
Butter and ghee	0.2	0,1	0,1	0,2	0,2	0,2	0,2	0,2	0,3	0,3	0,3
Eggs (piece)	10.9	6.1	8.6	9.6	11.0	11.0	11.6	12.3	12.4	13.2	13.1
Fish products	0.2	0.1	0.1	0.1	0.1	0.1	0.2	0.2	0.2	0.3	0.3
Sugar	0.5	0.4	0.4	0.4	0.5	0.5	0.6	0.6	0.6	0.6	0.6
Vegetable and other oils (liter)	0.5	0.5	0.5	0.5	0.5	0.5	0.5	0.6	0.6	0.6	0.6

2015	Total	Decile groups of consumption expenditures									
		I	II	III	IV	V	VI	VII	VII	IX	X
Bakery goods	11.4	9.9	10.2	10.6	11.0	11.5	11.5	11.9	12.4	12.4	12.6
Potato	3.5	3.2	3.3	3.3	3.4	3.4	3.4	3.6	3.6	3.6	3.8
Vegetables and vegetable crops	6.6	4.1	5.1	5.6	6.2	6.5	7.2	7.9	8.0	8.2	7.6
Fruits and berries, including dried fruit	3.9	1.8	2.6	3.0	3.1	3.7	4.3	4.5	5.0	5.2	5.9
Meat and meat products	1.9	1.0	1.3	1.4	1.5	1.8	1.9	2.2	2.3	2.6	3.1
Milk and yoghurt (liter)	1.8	1.4	1.5	1.6	1.6	2.0	1.9	2.1	2.0	1.9	2.1
Cheese	0.9	0.6	0.7	0.8	0.8	0.8	0.9	1.0	1.0	1.0	1.0
Butter and ghee	0.2	0.1	0.1	0.2	0.1	0.2	0.2	0.2	0.2	0.3	0.3
Eggs (piece)	10.5	6.3	8.7	9.1	10.0	10.5	10.7	12.0	12.2	12.3	13.4
Fish products	0.2	0.1	0.1	0.1	0.1	0.1	0.2	0.2	0.2	0.3	0.4
Sugar	0.6	0.4	0.5	0.5	0.6	0.7	0.7	0.7	0.7	0.7	0.7
Vegetable and other oils (liter)	0.5	0.4	0.5	0.5	0.5	0.5	0.5	0.6	0.6	0.6	0.6

2016	Total	Decile groups of consumption expenditures									
		I	II	III	IV	V	VI	VII	VII	IX	X
Bakery goods	11.3	9.8	10.0	10.1	10.8	11.3	11.9	12.1	12.0	12.4	12.6
Potato	3.4	2.8	3.0	2.9	3.2	3.5	3.6	3.7	3.5	3.7	3.8
Vegetables and vegetable crops	6.6	4.4	5.3	5.5	6.4	7.0	7.3	7.7	7.7	7.4	7.9
Fruits and berries, including dried fruit	3.9	1.7	2.3	2.4	3.2	3.8	4.2	4.9	4.9	5.4	6.7
Meat and meat products	2.0	0.9	1.2	1.4	1.6	1.9	2.2	2.2	2.4	2.7	3.2
Milk and yoghurt (liter)	1.8	1.5	1.3	1.6	1.6	1.8	1.9	2.0	2.0	2.0	2.3
Cheese	0.9	0.6	0.7	0.7	0.8	0.9	0.9	1.0	0.9	1.0	1.0

2016	Total	Decile groups of consumption expenditures									
		I	II	III	IV	V	VI	VII	VII	IX	X
Butter and ghee	0.2	0.1	0.1	0.1	0.2	0.2	0.2	0.1	0.2	0.2	0.3
Eggs (piece)	10.7	7.1	8.2	9.3	9.9	10.7	11.7	12.1	12.2	12.8	13.3
Fish products	0.2	0.1	0.1	0.1	0.2	0.2	0.2	0.2	0.2	0.3	0.3
Sugar	0.6	0.4	0.4	0.5	0.5	0.6	0.7	0.7	0.7	0.7	0.8
Vegetable and other oils (liter)	0.6	0.5	0.5	0.5	0.6	0.6	0.6	0.6	0.7	0.7	0.7

2017	Total	Decile groups of consumption expenditures									
		I	II	III	IV	V	VI	VII	VII	IX	X
Bakery goods	10.6	9.4	9.9	10.1	10.7	10.5	10.7	11.0	11.1	11.2	11.3
Potato	3.3	3.2	3.0	3.0	3.1	3.3	3.3	3.6	3.6	3.4	3.5
Vegetables and vegetable crops	6.2	4.3	5.4	5.8	6.0	6.3	6.3	6.8	7.1	6.7	7.6
Fruits and berries, including dried fruit	3.5	1.6	2.3	2.8	2.9	3.5	3.5	3.9	4.6	4.3	5.8
Meat and meat products	1.9	1.1	1.3	1.4	1.5	1.8	1.9	2.1	2.3	2.6	3.3
Milk and yoghurt (liter)	1.8	1.3	1.6	1.6	1.8	1.8	1.8	1.9	2.0	2.0	2.1
Cheese	0.8	0.6	0.7	0.7	0.8	0.8	0.8	0.9	0.9	1.0	1.0
Butter and ghee	0.2	0.1	0.2	0.1	0.2	0.2	0.2	0.2	0.2	0.2	0.3
Eggs (piece)	10.6	6.5	7.8	8.7	9.6	10.5	11.3	11.8	12.2	12.6	14.6
Fish products	0.2	0.1	0.1	0.1	0.2	0.2	0.2	0.2	0.2	0.3	0.4
Sugar	0.4	0.3	0.4	0.3	0.4	0.4	0.5	0.5	0.5	0.5	0.5
Vegetable and other oils (liter)	0.6	0.4	0.5	0.5	0.5	0.6	0.6	0.6	0.7	0.7	0.7

2018	Total	Decile groups of consumption expenditures									
		I	II	III	IV	V	VI	VII	VII	IX	X
Bakery goods	10.5	9.0	9.5	9.9	10.4	10.6	10.7	10.5	11.2	11.3	11.3
Potato	3.3	2.8	3.0	3.3	3.4	3.1	3.3	3.2	3.6	3.7	3.7
Vegetables and vegetable crops	6.5	4.6	5.4	5.8	6.3	6.3	6.8	6.8	7.6	7.5	7.6
Fruits and berries, including dried fruit	3.6	1.9	2.5	2.8	3.2	3.5	4.1	3.9	4.2	4.3	5.3
Meat and meat products	2.0	1.0	1.4	1.5	1.8	1.9	2.1	2.2	2.3	2.7	3.2
Milk and yoghurt (liter)	1.6	1.2	1.4	1.5	1.6	1.6	1.6	1.6	1.6	1.8	1.9
Cheese	0.8	0.5	0.7	0.7	0.8	0.8	0.9	0.9	1.0	1.0	1.0
Butter and ghee	0.1	0.1	0.1	0.1	0.1	0.2	0.2	0.2	0.2	0.2	0.2
Eggs (piece)	11.3	7.5	9.3	10.9	10.4	11.0	11.3	11.8	12.7	13.6	14.2
Fish products	0.2	0.1	0.1	0.2	0.2	0.2	0.2	0.2	0.2	0.3	0.3
Sugar	0.4	0.3	0.3	0.4	0.4	0.4	0.5	0.5	0.5	0.6	0.5
Vegetable and other oils (liter)	0.6	0.4	0.5	0.5	0.5	0.5	0.6	0.6	0.7	0.7	0.7

Source: *ILCS 2004, 2008-2018*