

1.6. "FINANCIAL INSTITUTIONS" SECTOR ACCOUNTS

1.6.1 PRODUCTION ACCOUNT (in current prices)

Mln. drams

	1992	1993	1994	1995	1996	1997
Resources						
Output	1497	11992	6887	21887	19162	22468
Uses						
Intermediate consumption	118	1700	612	2627	2440	2441
Gross value added	1379	10292	6275	19260	16722	20027

1.6.2 GENERATION OF INCOME ACCOUNT (in current prices)

Mln. drams

	1992	1993	1994	1995	1996	1997
Resources						
Gross value added	1379	10292	6275	19260	16722	20027
Subsidies on production and imports (-)	-	-	-	-	-	-
subsidies on products and imports	-	-	-	-	-	-
other subsidies on production	-	-	-	-	-	-
Uses						
Compensation of employees	410	7690	1681	3616	2910	3683
Taxes on production and import	1	8	1775	113	153	142
taxes on products and import	-	-	-	-	-	-
other taxes on production	1	8	1775	113	153	142
Gross mixed income	968	2594	2819	15531	13659	16202

1.6.3 DISTRIBUTION OF PRIMARY INCOME ACCOUNT (in current prices)

Mln. drams

	1992	1993	1994	1995	1996	1997
Resources						
Gross mixed income	968	2594	2819	15531	13659	16202
Compensation of employees	-	-	-	-	-	-
wages and salaries	-	-	-	-	-	-
actual social contributions	-	-	-	-	-	-
imputed social contributions	-	-	-	-	-	-
balance of wages and salaries from abroad paid to non-residents of Armenia	-
Property income receivable	2904	18224	7856	22348	21526	27390
Uses						
Property income payable	1492	8569	1699	4078	4510	7216
Balance of primary incomes (gross)	2380	12249	8976	33801	30675	36376

1.6.4 SECONDARY DISTRIBUTION OF INCOME ACCOUNT
(in current prices)

Mln. drams

	1992	1993	1994	1995	1996	1997
Resources						
Balance of primary incomes (gross)	2380	12249	8976	33801	30675	36376
Social contributions	34	-	51	308	915	1321
<i>including</i>						
actual social contributions	34	-	51	307	914	1321
imputed social contributions	-	-	-	1	1	-
Other current transfers receivable	160	40	11	39	55	242
Uses						
Current taxes on incomes, wealth and etc.	552	3817	1665	2394	4914	6794
Social benefits	3	6	163	256	85	210
Other current transfers payable	90	11	-	-	3	10
Gross disposable income	1929	8455	7210	31498	26643	30925

1.6.5 USE OF DISPOSABLE INCOME ACCOUNT
(in current prices)

Mln. drams

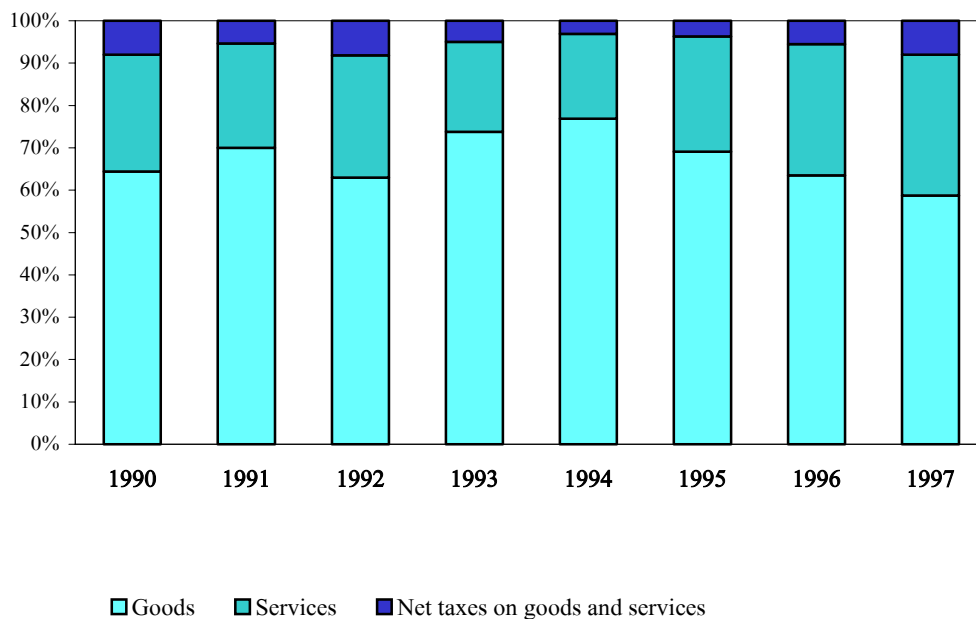
	1992	1993	1994	1995	1996	1997
Resources						
Gross disposable income	1929	8455	7210	31498	26643	30925
Uses						
Final consumption expenditure	-	-	-	-	-	-
Gross saving	1929	8455	7210	31498	26643	30925

1.6.6 OPERATION WITH CAPITAL ACCOUNT
(in current prices)

Mln. drams

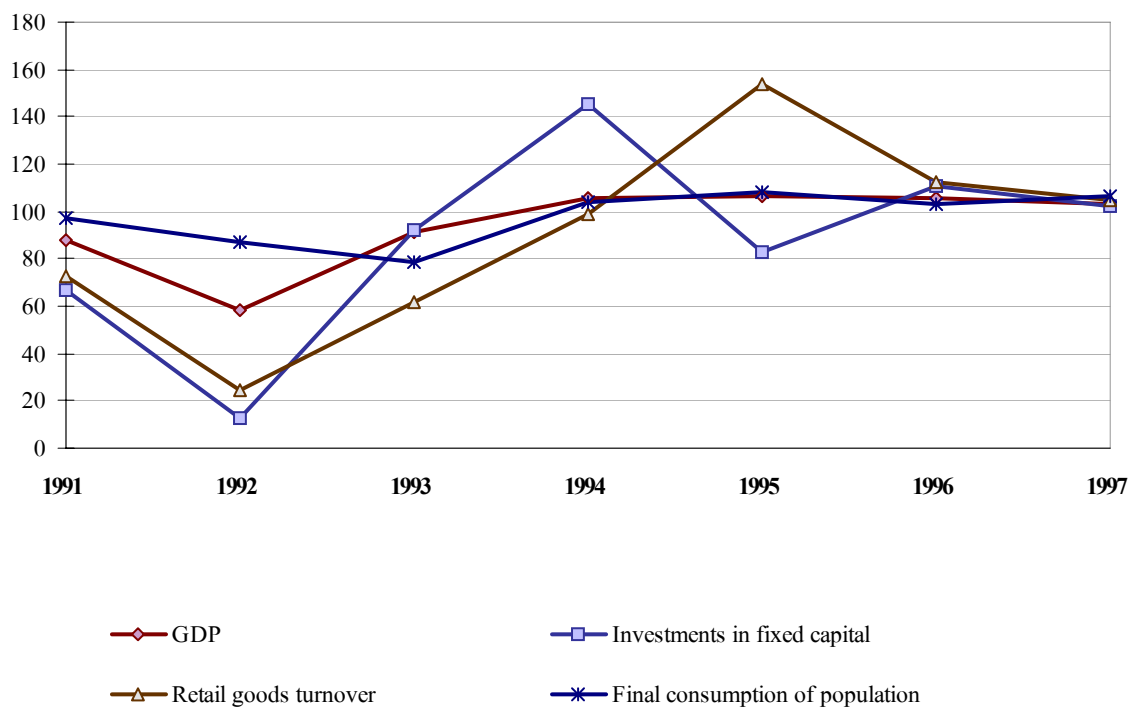
	1992	1993	1994	1995	1996	1997
Resources						
Gross saving	1929	8455	7210	31498	26643	30925
Capital transfers receivable	-	-	-	-	-	-
Capital transfers payable (-)	-	-	-	-	-	-
Uses						
Gross fixed capital formation	49	562	233	510	548	252
Changes in inventories	-	-	-	-	-	-
Net lending (+), net borrowing (-)	1880	7893	6977	30988	26095	30673

STRUCTURE OF PRODUCTION OF GROSS DOMESTIC PRODUCT*
(at market prices)

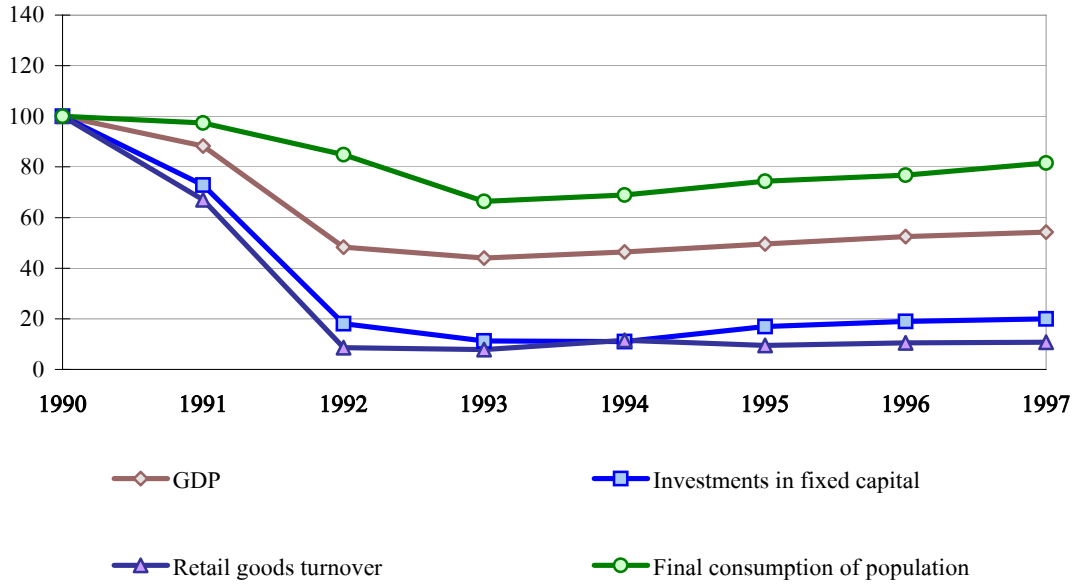


* Financial intermediation services indirectly measured are distributed among intermediate consumption branches, produced goods and services.

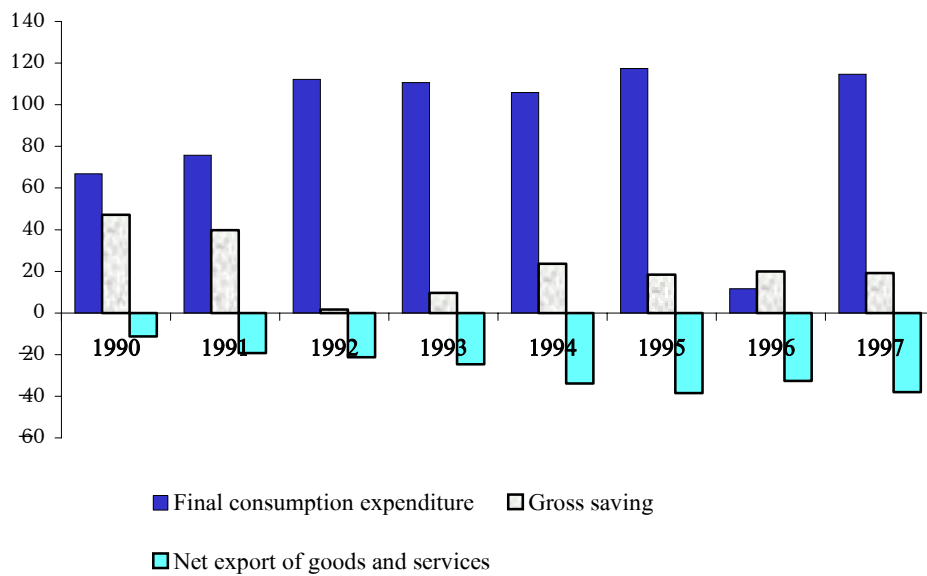
CHANGES IN BASIC MACROECONOMIC INDICATORS
(in % over previous year)



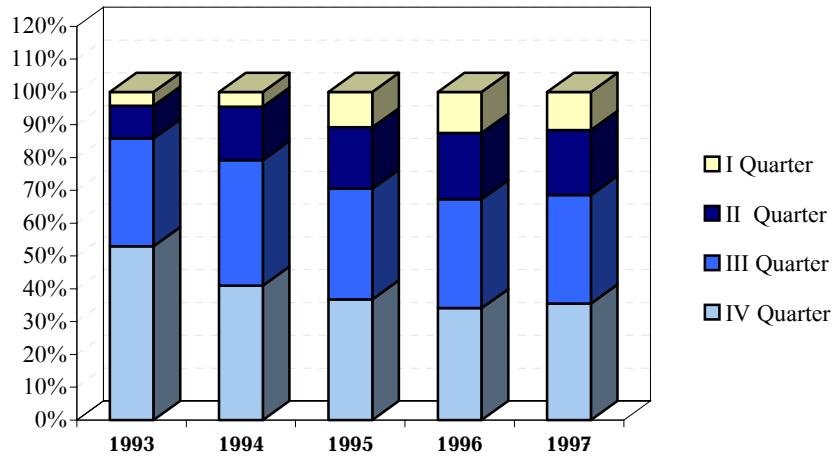
CHANGE OF BASIC MACROECONOMIC INDICATORS
(in % over 1990)



STRUCTURE OF USE OF GROSS DOMESTIC PRODUCT



STRUCTURE OF PRODUCTION OF GDP BY QUARTERS



DYNAMICS OF GDP IN CURRENT PRICES (at average annual prices of 1996)

