

## 4. 2đĩ 2øÆÙ Đ2ĩ ì 2Ì

### 4.1. ĐĐ í x³ ñ³ ÒÇÝ Ñ³ Bí »Í BÇéÁ 2001Á. Í »é³ ÙèÌ³ Í áòÙ

Àèì Ý³ ÈÝ³ Í 3 Ý ì í Ò³ ÉÝ»ñÇ, 2001Á. Í »é³ ÙèÌ³ Í Ç ĐĐ í x³ ñ³ ÒÇÝ Ñ³ Bí »Í BÇéÁ ÁÝÁ³ óÇÌ Ñ³ Bí Ç 1»ÝÇóÇì Á (á³ Ì³ éáòñ¹Á) Í 3 ½Ù»É ç 45.8 ÙÉÝ. 2ØÙ 1áÉ³ ñ (Ñ»ì 3 Ùèáò¹ 1áÉ³ ñ), áñÁ 2000Á. ÝáòÙÝ Á³ Ù³ Ý³ Í 3 BñÇ³ ÝÇ Ñ³ Ù»Ù³ ì áòÁÙ³ Ùµ Ýì 3 ½»É ç 44.2 ÙÉÝ. 1áÉ³ ñáí Ì³ Ù 49.1%: 2000Á. 3 ñ¹ÙáóÝùÝ»ñáí, ÁÝÁ³ óÇÌ Ñ³ Bí Ç 1»ÝÇóÇì Á ĐÙ²-áòÙ Í 3 ½Ù»É ç 16.7%, Ý³ Èáñ¹ ì 3 ñì 3 ÝáòÙÝ Á³ Ù³ Ý³ Í 3 BñÇ³ ÝÇ 36.2% 1ÇÙ³ ó:

ĐĐ í x³ ñ³ ÒÇÝ Ñ³ Bí »Í BÇéÁ ÁÝÁ³ óÇÌ Ñ³ Bí Ç á³ Ì³ éáòñ¹Á, ÇÝãá»è Ý³ Èáñ¹ ì 3 ñÇÝ»ñÇÝ, 3 ÙÝãá»è çÉ 2001Á. Í »é³ ÙèÌ³ Í Ç ÁÝÁ³ óúáòÙ, · áì³ ó»É ç ÑÇÙÝ³ Í 3 ÝáòÙ 3 áñ³ ÝùÝ»ñÇ Ý»ñÙáòÍ Ù³ Ý Ñ³ Bí ÇÝ:

2áñ³ ÝùÝ»ñÇ · Íáí Ñ³ Bí »Í BÇéÁ µ³ ó³ è³ Í 3 Ý ç 75.6 ÙÉÝ. 1áÉ³ ñáí 2000Á. ÝáòÙÝ Á³ Ù³ Ý³ Í 3 BñÇ³ ÝÇ Ñ³ Ù»Ù³ ì áòÁÙ³ Ùµ Ýì 3 ½»É ç 37.9 ÙÉÝ. 1áÉ³ ñáí Ì³ Ù 3.4%:

Ì 3 è³ ÙáòÁÙáòÝÝ»ñÇ µÝ³. 3 ì 3 éáòÙ 2001Á. 1-ÇÝ »é³ ÙèÌ³ Í Ç 3 ñ¹ÙáóÝùÝ»ñáí á³ Ì³ éáòñ¹Á Í 3 ½Ù»É ç 8.3 ÙÉÝ. 1áÉ³ ñ, 2000Á. 13.6 ÙÉÝ. 1áÉ³ ñÇ 1ÇÙ³ ó Ì³ Ù Ýì 3 ½»É ç 38.8%, ÁÝ¹ áñáòÙ Ì 3 è³ ÙáòÁÙáòÝÝ»ñÇ 3 ñì 3 Ñ³ ÝáòÙÝ 3 ×»É ç 19.5%, ÇèÌ Ý»ñÙáòÍ áòÙÁ¹ 1.3%:

2001Á. Í »é³ ÙèÌ³ Í Ç ÁÝÁ³ óúáòÙ ùì 3 ñ»ñì ñì³ Ý»ñ¹ñáòÙÝ»ñÇ µÝ³. 3 ì 3 éáòÙ, ÁÝ¹ Ñ³ Ýáòñ 3 éÙ³ Ùµ, · ñ³ Ýóí »É ç áñáß³ Í Ç á³ èÇì áòÁÙáòÝ: ÁÝ¹ áñáòÙ, 3 ñì 3 ùÇÝ ÙÇÇáóÝ»ñÇ Ù³ ùáòñ Ý»ñÑáèùÁ Ì 3 ½Ù»É ç 33.86 ÙÉÝ. 1áÉ³ ñ, áñÇó³ áòÁÙáòÝ»ñÁ¹ 37.8 ÙÉÝ. 1áÉ³ ñ, 3 ÙÝ 1»áòáòÙ, »ñµ 2001Á. Í »é³ ÙèÌ³ Í Ç 3 Ù¹ óáòó³ ÝÇBÝ»ñÁ Ñ³ Ù³ á³ ì 3 èÈ³ Ý³ µ³ ñ Ì 3 ½Ù»É ç ÇÝ 61.6 ÙÉÝ. 1áÉ³ ñ 45.3 ÙÉÝ. 1áÉ³ ñ:

2001Á. Í »é³ ÙèÌ³ Í Ç ÁÝÁ³ óúáòÙ á»ì 3 Ì 3 Ý á³ Ñáòèì 3 ÒÇÝ 3 Ì ì Çì Ý»ñÁ Ýì 3 ½»É »Ý 16.45 ÙÉÝ. 1áÉ³ ñáí, 2000Á. 12.0 ÙÉÝ. 1áÉ³ ñÇ 1ÇÙ³ ó:

**2000-2001ÁÁ. Í »é³ ÙèÌ³ Í ÇÝ»ñÇ ĐĐ í x³ ñ³ ÒÇÝ Ñ³ Bí »Í BÇéÁÝ»ñÇ Ì 3 ñèáòÍ 3 Ì 3 Ý Ý»ñì 3 Ù³ óáòÙÁ**  
(ÙÉÝ. 2ØÙ 1áÉ³ ñ)

	2000Á. Í »é³ ÙèÌ³ Í	2001Á. Í »é³ ÙèÌ³ Í	2×Çì »ÙáÁ, %	Í 3 ó³ ñó³ Ì ÷ á ÷ á ÈáòÁÙáòÝÁ
<b>A. ÁÙÁ²ðÆÌ Đ²BÆÌ ³ è³ Ýó È ÈÙµÇ</b>	-89.98	-45.80	50.9	44.19
²áñ³ ÝùÝ»ñ:	Ì ñ»¹Çì	60.96	79.27	130.0
²ñì 3 Ñ³ ÝáòÙ ùù´	58.74	76.74	130.6	18.00
²ÙÈù	2.22	2.53	113.9	0.31
²áñ³ ÝùÝ»ñ:	1»µ»ì	-174.40	-154.85	88.8
Ù»ñÙáòÍ áòÙ ùù´	-171.54	-151.22	88.2	20.33
²ÙÈù	-2.86	-3.63	126.9	-0.77
Đ³ Bí »Í BÇé ³ áñ³ ÝùÝ»ñÇ · Íáí	-113.45	-75.58	66.6	37.87
Ì 3 è³ ÙáòÁÙáòÝÝ»ñ:	Ì ñ»¹Çì	30.04	35.90	119.5
ì ñ³ Ýèááñì ³ ÒÇÝ	12.82	15.51	120.9	2.69
²ÙÈù	17.22	20.39	118.4	3.17
Ì 3 è³ ÙáòÁÙáòÝÝ»ñ:	1»µ»ì	-43.68	-44.24	101.3
ì ñ³ Ýèááñì ³ ÒÇÝ	-27.33	-28.40	103.9	-1.06
²ÙÈù	-16.34	-15.84	96.9	0.50
Đ³ Bí »Í BÇé ³ áñ³ ÝùÝ»ñÇ 3 Ì 3 è³ ÙáòÁÙáòÝÝ»ñÇ · Íáí	-127.08	-83.92	66.0	43.16
óÍ³ Ùáòì Ý»ñ:	Ì ñ»¹Çì	22.35	20.36	91.1

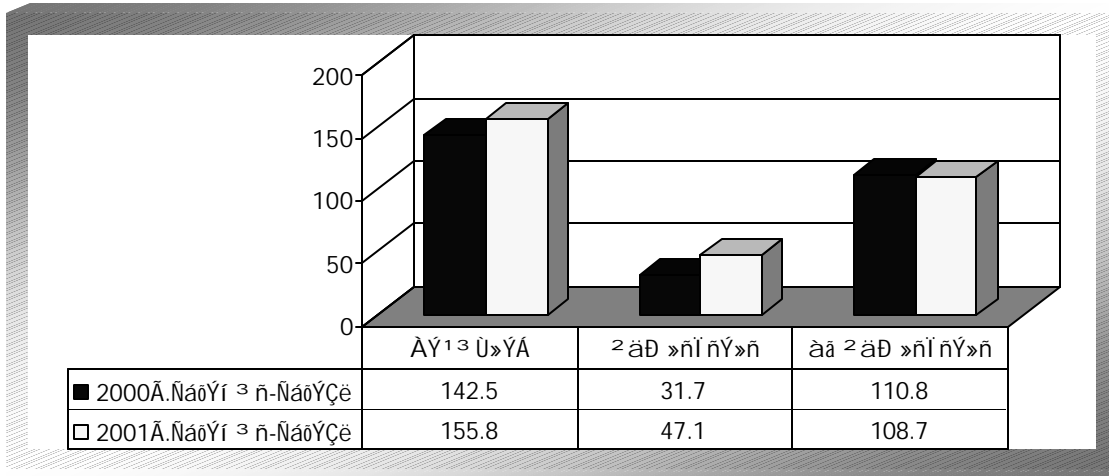
4. 2011 2010 2009 2008

	2000A. I 2000	2001A. I 2001	2002A. I 2002	2003A. I 2003
2000A. I 2000	-21.23	-8.85	41.7	12.38
2001A. I 2001	-125.96	-72.41	57.5	53.55
2002A. I 2002	40.16	30.83	76.8	-9.33
2003A. I 2003	-4.18	-4.21	100.7	-0.03
<b>B. 2004A. I 2004</b>	7.04	2.28	32.4	-4.76
2004A. I 2004	7.08	2.40	33.9	-4.68
2005A. I 2005	-0.04	-0.12	300.0	-0.08
2006A. I 2006	-82.94	-43.52	52.5	39.43
<b>C. 2007A. I 2007</b>	61.62	33.86	54.9	-27.77
2007A. I 2007	0.00	0.00	~	0.00
2008A. I 2008	45.43	37.81	83.2	-7.62
2009A. I 2009	-0.09	-0.43	477.8	-0.34
2010A. I 2010	-0.05	-0.48	960.0	-0.43
2011A. I 2011	-0.04	0.05	~	0.09
2012A. I 2012	-0.10	1.77	~	1.87
2013A. I 2013	0.25	-0.04	~	-0.29
2014A. I 2014	-0.35	1.81	~	2.16
2015A. I 2015	-29.79	-24.30	81.6	5.49
2016A. I 2016	0.04	-0.07	~	-0.11
2017A. I 2017	-24.60	-14.01	57.0	10.59
2018A. I 2018	-7.83	-3.05	39.0	4.78
2019A. I 2019	2.60	-7.17	~	-9.77
2020A. I 2020	46.17	19.01	41.2	-27.17
2021A. I 2021	1.23	1.29	104.9	0.06
2022A. I 2022	18.00	11.90	66.1	-6.11
2023A. I 2023	9.39	-3.03	~	-12.42
2024A. I 2024	17.55	8.85	50.4	-8.70
<b>A 2025A. I 2025</b>	-21.32	-9.66	45.3	11.66
<b>B 2026A. I 2026</b>	8.57	-4.96	~	-13.53
<b>A 2027A. I 2027</b>	-12.76	-14.62	114.6	-1.87
<b>E 2028A. I 2028</b>	12.76	14.62	114.6	1.87
2029A. I 2029	12.02	16.45	136.9	4.43
2030A. I 2030	-4.25	-1.83	43.1	2.42
2031A. I 2031	4.99	0.00	0.0	-4.99

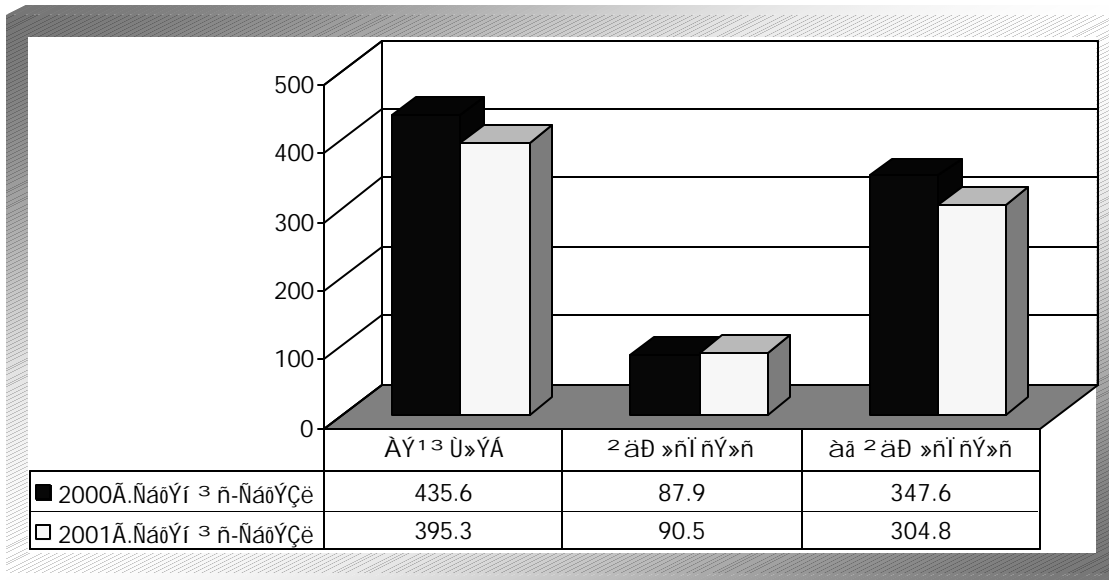
\* " " 2000 2001 2002 2003 2004 2005 2006 2007 2008 2009 2010 2011 2012 2013 2014 2015 2016 2017 2018 2019 2020 2021 2022 2023 2024 2025 2026 2027 2028 2029 2030 2031



**2000 2001 . . . . . 2000 2001 . . . . .**  
**2000 . . . . .**  
**2001 . . . . .**



**U»nUaolaoU (UeY. 1af3n)**



**DD 3 ni 3 ucY 3 e . . . . . 2001 . . . . .**  
**2001 . . . . .**

onln 3 Y 3 YaouA	201 2020a00			Uo00aol a00			2e . . . . . N3 B1 »I BCeA N3 1/2 \$
	3 nA»uA		i »e3 I . I BCeA	3 nA»uA		i »e3 I . I BCeA	
	UeY. 1n3 U	N3 1/2 \$		UeY. 1n3 U	N3 1/2 \$		
<b>A U , 2 0 U A</b>	<b>85863.3</b>	<b>155767.8</b>	<b>100.0</b>	<b>217947.9</b>	<b>395292.8</b>	<b>100.0</b>	<b>-239525.0</b>
anCo.							
<b>2ad oolouo</b>	<b>25951.2</b>	<b>47094.6</b>	<b>30.23</b>	<b>49871.3</b>	<b>90488.2</b>	<b>22.89</b>	<b>-43393.5</b>
3 U1 Ai aou.							
eaoe3 ei 3 Y	15005.6	27237.6	17.49	39545.7	71761.6	18.15	-44524.0
Aaonou»Yei 3 Y	377.7	690.2	0.44	114.6	207.0	0.05	483.1
i n3 ei 3 Y	5656.2	10259.1	6.59	4477.8	8118.3	2.05	2140.9

4. 201 2000 21 21

0n1 n3 3 Yr 3 YáoUA	201 2020a00			0°00a0l a00			2e'i n3 0CÝ N3 Bf »I BCeÁ N3 ½.\$
	3 nA»úA		i »e3 I. I BCeÁ	3 nA»úA		i »e3 I. I BCeÁ	
	UEY. 1n3 U	N3 ½. \$		UEY. 1n3 U	N3 ½. \$		
»Eáeá0e	269.6	489.0	0.31	344.6	624.0	0.16	-135.0
a0l n3 CÝ3	3741.8	6785.4	4.36	4856.4	8808.9	2.23	-2023.5
03 ½3 Eer 3 Y	306.1	556.7	0.36	90.0	163.2	0.04	393.5
2a0 3 0E »n1 nY»n	594.2	1076.6	0.69	442.2	805.2	0.20	271.4
<b>aa 2a0 »n1 nY»n</b>	<b>59912.1</b>	<b>108673.1</b>	<b>69.77</b>	<b>168076.6</b>	<b>304804.6</b>	<b>77.11</b>	<b>-196131.5</b>
3 0l Aí a0U*							
<b>00 »n1 nY»n</b>	<b>22292.2</b>	<b>40448.9</b>	<b>25.97</b>	<b>63802.7</b>	<b>115677.7</b>	<b>29.26</b>	<b>-75228.8</b>
»E. C3	12646.7	22942.1	14.73	13327.9	24167.9	6.11	-1225.8
Un3 YeC3	239.6	435.3	0.28	3242.7	5889.0	1.49	-5453.6
»nU3 YC3	2591.1	4703.9	3.02	6926.3	12567.8	3.18	-7863.9
Ei 3 EC3	1054.7	1913.5	1.23	8349.4	15134.5	3.83	-13221.0
U3 »nE3 Y1Y»n	517.9	944.6	0.61	1976.9	3583.0	0.91	-2638.3
0»I nC3 3 YC3	4010.1	7275.1	4.67	19771.9	35821.1	9.06	-28546.0
0a0Y3 er 3 Y	834.0	1515.5	0.97	3993.7	7261.4	1.84	-5746.0
Ela0u»Ua0n.	0.0	0.0	0.00	607.3	1100.4	0.28	-1100.4
<b>20E »n1 nY»n</b>	<b>398.2</b>	<b>718.9</b>	<b>0.46</b>	<b>5606.7</b>	<b>10152.6</b>	<b>2.57</b>	<b>-9433.7</b>
Bí »l03 nC3	2294.7	4160.9	2.67	9343.2	16972.6	4.29	-12811.7
Eñ3 Y	8016.2	14526.5	9.33	21189.2	38426.5	9.72	-23900.0
Een3 0»E	7652.2	13869.0	8.90	6826.6	12383.1	3.13	1486.0
Aa0nU3	288.5	522.6	0.34	8293.0	15052.0	3.81	-14529.4
02%	1452.9	2633.6	1.69	11272.6	20449.2	5.17	-17815.5
20U	10577.6	19213.9	12.33	21062.3	38175.5	9.66	-18961.6
I CAnaé	742.2	1346.0	0.86	2389.8	4324.7	1.09	-2978.8
20E »n1 nY»n	6595.5	11951.7	7.67	23897.2	43343.4	10.96	-31391.7

2001A. Na0Yr 3 n-Na0YCeCÝ 3 nr 3 N3 YU3 Y I 3 r 3 EC 30.2% a000r »E i 2a0 »n1 nY»n CeI 69.8% aa 2a0 »n1 nY»n: U»nUa0l U3 Y I 3 r 3 EC 22.9% m3 AÇY i AYI »E 2a0 »n1 nY»n, CeI 75.7% aa 2a0 »n1 nY»nÇY:

2nr 3 N3 YU3 Y .. Y»nUa0l U3 Y I 3 r 3 EY»nY a0 i »e3 I 3 n3 n I BCeY»nA 2001A. Na0Yr 3 n-Na0YCeCÝ, Aeri 00 U3 n½»nÇ .. on3 Y u3 03 u3<sup>1</sup>  
 (Aeri m»eY3 U3 ue3 0CÝ N3 0l 3 n3 n3. n»nÇ, 3 e3 Yo yC½CÍ 3 I 3 Y 3 Y03 Yo I a0UÇ0 I 3 ½U3 I »nAí 3 I 3 e3 i nÇ i I 03 EY»nÇ)

03 n½C / u3 03 u3 3 Yr 3 YáoU	2nr 3 N3 YáoU			U»nUa0l a0U		
	3 nA»úA		i »e3 I. I BCeÁ,%	3 nA»úA		i »e3 I. I BCeÁ,%
	UEY. 1n3 U	N3 ½. \$		UEY. 1n3 U	N3 ½. \$	
AY13 U»YA	<b>83402.7</b>	<b>151289.0</b>	<b>100.0</b>	<b>207713.8</b>	<b>376678.6</b>	<b>100.0</b>
u.on3 Y	49787.8	90302.6	59.7	161376.5	292634.1	77.69
2n3. 3 íái Y	82.4	149.3	0.1	465.8	842.4	0.22
2n3 n3 i	2359.2	4274.0	2.8	2866.0	5189.5	1.38
2nU3 í Cñ	474.4	861.6	0.6	1853.8	3362.5	0.89
BÇñ3 I	222.5	403.3	0.3	3955.5	7177.1	1.91

<sup>1</sup> 2nr 3 N3 YU3 Y .. Y»nUa0l U3 Y I 3 r 3 EY»nÇ m3 BEa0UY Aeri U3 n½»nÇ Cñ3 I 3 Y3 0f »E i N3 U3 03 0Y I 3 ½U3 I »nAí a0Ua0Y»nÇ i Yi »e3 I 3 Y . aní a0Y»a0AU3 Y Cñ3 I 3 Y3 0U3 Y í 3 0nÇ 00 a»i »I 3 Ua0l Y»nÇ Y3 E3 n3 na0A0a0YÇ0 er 3 0f 3 í i »0»i 3 i í a0AU3 Y NÇU3 Y í n3 :

03 n1/2 / u3 03 u2 3 Y1 3 YaoU	2ni 3 N3 YaoU			U»nUaol aoU		
	3 nA » uA		i »e3 I. I BCEA,%	3 nA » uA		i »e3 I. I BCEA,%
	UEY. 1n3 U	N3 1/2. \$		UEY. 1n3 U	N3 1/2. \$	
i 3 lao Oan	207.2	375.4	0.2	731.3	1323.4	0.35
i 3 i aob	96.9	175.9	0.1	94.6	173.0	0.05
elaoYCu	5246.7	9530.9	6.3	8836.0	16022.3	4.25
¶03 nuaoYCu	482.4	876.0	0.6	845.3	1531.3	0.41
EaeC	5097.1	9239.8	6.1	3694.9	6697.3	1.78
I ai 3 lu	19346.2	35100.2	23.2	22994.2	41725.7	11.08

2001A. Naoyi 3 n-NaoyCeC DD 3 ni 3 uCY 3 e''i n3 Bnc3 Y3 eaoAU3 Y 72.5% (3 ni 3 N3 YaoUA 59.7%, Y»nUaol aoUA 77.7%) Cn3 I3 Y3 oi »E i o n''3 Y u3 03 uaoU i Yi »e3 I3 Y . anI aoY»aoAUaoY Cn3 I3 Y3 oYaO I3 1/2 I »naoAUaoY»nc I aoUCo, 14.6% I ai 3 luC U3 n1/2, 4.8% elaoYCu U3 n1/2 I3 1/2 I »naoAUaoY»nc I aoUCo: D3 Yn3 a»i aoAU3 Y Ulaoe U3 n1/2 naou 3 ni 3 uCY 3 e''i n3 Bnc3 Y3 eaoAU3 Yi »e3 I3 n3 n I BCEA, N3 U3 a3 i 3 eE3 Y3 m3 n aC . »n3 1/2 Yo»E 3%:

**2ni 3 uCY 3 e''i n3 a»i au3 Y u3 uCY I3 eaooi 3 I uA**

**D3 Yn3 a»i aoAU3 Y 3 ni 3 uCY 3 e''i n3 Bnc3 Y3 eaoAUaoY  
Aei 3 e3 YO CY 3 a»i au3 EUm»nc, 2001A. Naoyi 3 n-NaoyCeC Y**

	201 202 Uaoo			UoOaol aoO			D3 Bi »- I BCEA, N3 1/2. \$
	3 nA » uA		i »e3 I. I BCEA,%	3 nA » uA		i »e3 I. I BCEA, %	
	UEY. 1n3 U	N3 1/2. \$		UEY. 1n3 U	N3 1/2. \$		
A U 2 0 U A	85863.3	155767.8	100.00	217947.9	395292.8	100.00	-239525.0
3 U1 Ai aoUa							
I »Y13 YC I »Y13 YCY»n''							
I »Y13 Y3 I3 Y I3 . U3 Y3 ni 3 1n3 Yu	578.9	1054.3	0.68	8726.9	15825.8	4.00	-14771.5
'aoe3 I3 Y I3 . U3 Y3 ni 3 1n3 Yu	370.3	671.3	0.43	22741.4	41258.8	10.44	-40587.6
I »Y13 Y3 I3 Y '' maoe3 I3 Y I3 . U3 Y UaoO»n'' x3 na»n	33.5	60.4	0.04	5380.0	9758.9	2.47	-9698.5
a3 i n3 ei C eY1C 3 ni 3 1n3 Yu	12231.9	22202.6	14.25	19429.2	35224.4	8.91	-13021.8
D3 Yu3 NaouU3 UCY 3 ni 3 1n3 Yu	10581.8	19187.3	12.32	44311.9	80278.6	20.31	-61091.3
OUC3 UC '' 1n3 N»i I3 a3 i I3 n1 lao- Y3 m»naoAU3 Y x laoO»nc 3 ni 3 1n3 Yu	547.7	994.8	0.64	16436.8	29788.0	7.54	-28793.2
aE3 ei U3 ee3 '' 1n3 YoCo							
Cn»n, I3 aaoai '' e»i CY» Cn»n	4892.6	8869.8	5.69	5979.2	10853.8	2.75	-1984.0
I3 Bi » NaouU, I3 BC, UanAC '' 1n3 YoCo a3 i n3 ei i3 I Cn»n	486.7	881.6	0.57	2434.7	4434.0	1.12	-3552.4
O3 U1 '' 3 U1 U3 Cn»n	197.1	357.6	0.23	1350.2	2450.3	0.62	-2092.7
AaoOA '' AOAC Cn»n	80.6	145.9	0.09	4905.2	8892.5	2.25	-8746.5
O3 Y3 I3 . anI 3 I3 Y Cn»n	3621.8	6573.0	4.22	9219.3	16720.2	4.23	-10147.2
I aB1 »O»Y, . EE3 ni Y»n, Nai 3 YaoY»n	88.9	161.2	0.10	1686.8	3067.9	0.78	-2906.6
Aen»n u3 nCo, . CaCeCo, o»U»Yi Co	501.8	915.7	0.59	3781.8	6860.0	1.74	-5944.3
A3 YI3 nA»u '' I Ce3 A3 YI3 nA»u u3 n»n, A3 YI3 nA»u U»i 3 OY»n '' 1n3 YoCo Cn»n	30439.1	55213.8	35.45	24052.5	43611.7	11.03	11602.1
aa A3 YI3 nA»u U»i 3 OY»n '' 1n3 YoCo a3 i n3 ei i3 I Cn»n	12819.8	23237.1	14.92	8405.8	15256.7	3.86	7980.4
O»u»Y3 Y»n, e3 nu3 i anaouY»n '' U»E3 YC1/2U»n	6398.0	11632.2	7.47	21641.4	39280.2	9.94	-27648.0
i »n. »i YI3, u13 UCY '' cn3 UCY i n3 YeanaI C UCcaoY»n	531.2	963.1	0.62	6314.1	11478.9	2.90	-10515.8
e3 nu»n '' 3 a3 n3 i Y»n	1269.9	2299.3	1.48	8401.7	15263.2	3.86	-12964.0
i 3 n»n 3 n1 laoY3 m»n3 I3 Y a3 n3 YuY»n	119.5	216.0	0.14	2748.0	4987.3	1.26	-4771.2
2ni »ei C ei »OI3 . anI aoAUaoY»n	72.1	130.9	0.08	1.0	1.8	0.00	129.1

2001. NaoYi 3 n-NaoYCeCY N 3 Yn 3 a i aoAlaoYCo 3 ni 3 N 3 Yi 3 I 3 a n 3 YuY nC AY 1 N 3 Yaon I 3 i 3 eC 35.45% I 3 1/2 U e Y UB 3 I 3 I 3 I 3 YUB 3 I 3 EU 3 ei Y nA, A 3 Yi 3 nA u U i 3 OY nC c 3 n 1 aYA A 3 aYA, aeI n n 3 I 3 Y C n nA, 14.92% a A 3 Yi 3 nA u U i 3 OY nA I 3 n 3 YoCo a 3 i - n 3 ei i 3 I C n nA, 12.32% N 3 Yu 3 NaoUu 3 UCY 3 ni 3 1 n 3 YuA, 14.25% a 3 i n 3 ei C eY 1 C 3 n - i 3 1 n 3 YuA: UnUaoI U 3 Y U c 3 e 3 i e U l i e 3 I 3 n 3 n I B Ce Y I 3 1/2 U e eY 1 C 3 n 1 UaoY 3 - m n a o A I 3 Y, I 3 Y 1 3 Y 3 I 3 Y I 3 Y I 3 Y. U 3 Y 3 ni 3 1 n 3 YuA 25.82%, N 3 Yu 3 NaoUu 3 UCY 3 n - i 3 1 n 3 YuA 20.31%, UB 3 I 3 I 3 I 3 YUB 3 I 3 EU 3 ei Y nA, A 3 Yi 3 nA u U i 3 OY nC c 3 n 1 aYA A 3 aYA, aeI n n 3 I 3 Y C n nA 11.0%, U u Y 3 Y nA, e 3 nu 3 i a n a o U Y nA U E 3 Y C 1/2 U Y nA 9.94%:

2001. NaoYi 3 n-NaoYCeCY 3 e i n 3 UCY N 3 Bi I B Ce A 1 n 3 I 3 Y i UC 3 UY 3 3 a n 3 Yu 3 EU m n C . I a i, NCUY 3 I 3 Yaou A 3 Yi 3 nA u U i 3 OY nC c 3 n 1 aY C A 3 aY C, aeI n n 3 I 3 Y C n n C EU maou 11602.1 N 3 1/2. 1 a E 3 n, a A 3 Yi 3 nA u U i 3 OY nC I 3 n 3 YoCo a 3 i n 3 ei i 3 I C n n C EU maou 7980.4 N 3 1/2. 1 a E 3 n: AeI UY 3 o 3 I 3 a n 3 Yu 3 EU m n a o U 3 e i n 3 UCY N 3 Bi I B Ce A I 3 1/2 U e i 78079.4 N 3 1/2. 1 a E 3 n, N 3 Yu 3 NaoUu 3 UCY 3 ni 3 1 n 3 Yu C . I a i 61091.3 N 3 1/2. 1 a E 3 n:

2 ni 3 N 3 Yu 3 Y I 3 n UaoI U 3 Y I 3 i 3 EY n C 3 x n C i U a n Y Ae i 3 a n 3 Yu 3 EU m n C

	2 ni 3 N 3 Yaou			UnUaoI aoU		
	2000A. NaoYi 3 n-NaoYCe, N 3 1/2. \$	2001A. NaoYi 3 n-NaoYCe, N 3 1/2. \$	3 x C i U a A (%)	2000A. NaoYi 3 n-NaoYCe, N 3 1/2. \$	2001A. NaoYi 3 n-NaoYCe, N 3 1/2. \$	3 x C i U a A (%)
A U 2 0 U A 3 U i A i aoU.	142520.2	155767.8	109.30	435575.2	395292.8	90.75
I 3 Y 1 3 Y C I 3 Y 1 3 Y C Y n I 3 Y 1 3 Y 3 I 3 Y I 3 . U 3 Y 3 ni 3 1 n 3 Yu	209.0	1054.3	5 3 Y .	17044.0	15825.8	92.85
a o e 3 I 3 Y I 3 . U 3 Y 3 ni 3 1 n 3 Yu	834.4	671.3	80.45	50382.3	41258.8	81.89
I 3 Y 1 3 Y 3 I 3 Y I 3 Y I 3 Y I 3 . U 3 Y Uao n x n a n	0.3	60.4	187 3 Y .	9129.8	9758.9	106.89
a 3 i n 3 ei C eY 1 C 3 n 3 1 n 3 Yu	9961.5	22202.6	222.88	31801.6	35224.4	110.76
D 3 Yu 3 NaoUu 3 UCY 3 ni 3 1 n 3 Yu	19504.2	19187.3	98.38	82294.8	80278.6	97.55
OUC 3 UC I 3 n 3 N i I 3 a i 3 I 3 n 1 Uao - Y 3 m n a o A I 3 Y x l a o n C 3 ni 3 1 n 3 Yu	1961.9	994.8	50.70	42548.0	29788.0	70.01
a E 3 ei U 3 e e 3 I 3 n 3 YoCo C n n, I 3 a o a o I 3 e i C Y C n n	3616.8	8869.8	245.24	8910.6	10853.8	121.81
I 3 Bi NaoUu, I 3 B C, U a n A C I 3 n 3 YoCo a 3 i n 3 ei i 3 I C n n	532.6	881.6	165.52	515.1	4434.0	860.85
o 3 U i I 3 U i U 3 C n n	286.7	357.6	124.74	2242.7	2450.3	109.26
A a o A I 3 A o A C C n n	168.4	145.9	86.64	11248.4	8892.5	79.06
O 3 Y 3 I 3 . a n I 3 I 3 Y C n n	5610.6	6573.0	117.15	15532.3	16720.2	107.65
I a B I O Y, E 3 n I Y n, N a i 3 Ya o Y n	355.1	161.2	45.40	2389.9	3067.9	128.37
A n n u 3 n C o, C a e C o, o U Y i C o	1583.4	915.7	57.83	4397.3	6860.0	156.01
A 3 Yi 3 n A u I 3 e 3 A 3 Yi 3 n A u u 3 n n, A 3 Yi 3 n A u U i 3 OY n I 3 n 3 YoCo C n n	64247.8	55213.8	85.94	58965.4	43611.7	73.96
a A 3 Yi 3 n A u U i 3 OY n I 3 n 3 YoCo a 3 i n 3 ei i 3 I C n n	22079.2	23237.1	105.24	9414.4	15256.7	162.06
O u Y 3 Y n, e 3 nu 3 i a n a o U Y n U E 3 Y C 1/2 U Y n	9158.2	11632.2	127.01	62729.5	39280.2	62.62
I n. i Y U 3, u 1 3 UCY I 3 n 3 UCY i n 3 Ye a n i C UC a o Y n	992.6	963.1	97.03	12707.0	11478.9	90.34
e 3 nu n I 3 a 3 n 3 i Y n	1059.2	2299.3	217.08	6996.7	15263.2	218.15
I 3 n m n 3 n 1 Uao Y 3 m n 3 I 3 Y 3 a n 3 Yu Y n	257.1	216.0	84.04	6290.6	4987.3	79.28
2 ni e i C e i O I 3 . a n I a o U a o Y Y n	101.3	130.9	129.26	35.1	1.8	5.15

2000. NaoYi n-NaoYce N U U i n i N Y U Y I I E C x j i O C a o Y o E N C U Y I Y a o U a i n e i C e Y Y I C n i n Y u C (2.23 Y. U), a f e i U e e l C n Y o C C n n C, I a a a o I C e i C Y C n n C (2.45 Y. U), U u Y Y n C e n u i a n a o U Y n C (1.33 Y. U) a n Y u E U m n C. I a i : O C Y a o U A U Y I, 49.3% Y i 1/2 E Y u C U C l C n N i I a i I n l a o Y m n a o A l Y x l a o O n C n i n Y u C, 14.1% A Y I n A u I C e A Y I n A u u n n n C, A Y I n A u U i O Y n C n Y o C C n n i N Y a o U A:

2000. NaoYi n-NaoYce N U U i a o A l U m 2.13 Y. U x E Y e n u n C a n i Y n C, 10.8% a i n e i C e Y Y I C n i n Y u C, 7.7% U Y I I. a n I I Y C n n C, 62.1% a A Y I n A u U i O Y n C n Y o C C a i n e i I C n n C Y n U a o l a o U A: O C Y a o U A U Y I, 24.0% Y i 1/2 E Y A Y I n A u I C e A Y I n A u u n n n C, 37.4% U u Y Y n C e n u i a n a o U Y n C, 30.0% u C U C l C n N i I a i I n l a o Y m n a o A l Y x l a o O n C n i n Y u C, 18.1% m a o e I I Y I I. U Y n i n Y u C Y n U a o l a o U A:

4.2.2. O n e c n I Y u. Y a o A l a o Y

A e i m e Y U u e l C Y N l i n n n. n n C, 2001. NaoYi n-NaoYce Y U n e c n I Y u. Y a o A l Y I n. a i, O U e i Y C O Y n a i a o A l a o Y Y Y n U a o l i E 24693.3 i a Y Y a n Y u Y n, a n a Y o n A u A I 1/2 U E j 7686.8 U E Y. n U I U 13.9 U E Y. 1 a E n:

e i o i I u. Y a o A l Y 29.31% I 1/2 U E Y m a o e I I Y I I. U Y n i n Y u A (2000 NaoYi n-NaoYce Y 6.6%), 29.34% u C U C l C n N i I a i I n l a o Y m n a o A l Y x l a o O n C n i n Y u A (2000. NaoYi n-NaoYce Y 41.7%), 8.2% e n u n A a n i Y n A (2000. NaoYi n-NaoYce Y 9.3%) U e m e Y n:

O n e c n I Y u. Y a o A l Y I I E Y A e i a n Y u U C Y E U m n C

	2000 A. NaoYi n-NaoYce			2001 A. NaoYi n-NaoYce			2 x C i U a A, %
	u Y I A, i a Y Y	n A u A		u Y I A, i a Y Y	n A u A		
		U E Y. n U	N 1/2. 2 O U \$		U E Y. n U	N 1/2. 2 O U \$	
A U 2 0 U A	23360.7	23799.4	44561.2	24693.3	7686.8	13930.9	31.3
U i A i a o U.							
I Y I Y C I Y I Y C Y n I Y I Y I Y I Y I I. U Y n i n Y u	835.6	1533.8	2903.0	-	-	-	-
U e e I I Y I I. U Y n i n Y u	8257.8	1570.0	2961.5	19823.8	2248.5	4082.6	137.9
I Y I Y I Y I Y m a o e I I Y I I. U Y l a o O n x n a n	1504.6	696.2	1318.3	973.0	434.1	784.8	59.5
a i n e i C e Y Y I C n i n Y u	1166.7	620.1	1156.4	119.0	52.9	95.6	8.3
O Y u N a o U u C Y n i n Y u	20.4	4.4	8.2	1806.6	149.9	271.3	3289.9
O C U C l C n N i I a i I n l a o Y m n a o A l Y x l a o O n C n i n Y u	10124.5	9990.8	18602.7	877.0	2263.5	4087.8	22.0
a f e i U e e l C n Y o C C n n, I a a a o I e i C Y C n n	21.7	45.8	86.2	14.8	26.8	48.6	56.3
I B i N a o U, I B C, U a n A C n Y o C C a i n e i I C n n	0.3	1.2	2.3	-	-	-	-
O l i n l i l C n n	4.8	5.3	9.7	17.3	23.0	42.2	434.7
A a o A A O A C C n n	72.3	1032.9	1888.4	10.8	31.3	56.6	3.0
O Y I I. a n I I Y C n n	327.3	1722.7	3213.9	262.3	473.4	858.6	26.7
I a B I O Y, E E n I Y n, N a r Y a o Y n	9.8	53.0	100.1	5.2	83.2	150.4	150.3
A n n u n C o, C a e C o, o U Y i C o	61.3	14.8	27.7	39.2	12.1	22.0	79.4
a A Y I n A u U i O Y n n Y o C C a i n e i I C n n	18.0	23.8	44.4	28.2	14.9	27.1	61.0
O u Y Y n, e n u i a n a o U Y n	382.4	2804.4	5298.7	126.2	363.4	661.5	12.5



4. 201 2000 2001

	2000 . . .			2001 . . .			2000 2001 %
	2000 . . . 2001 . . .	2000 . . .		2001 . . . 2002 . . .	2001 . . .		
		2000 . . .	2001 . . .		2001 . . .	2002 . . .	
2000 . . .							
2000 . . .	300.8	621.0	1172.4	237.3	645.8	1174.8	100.2
2000 . . .	91.9	2202.6	4157.4	76.9	630.3	1143.1	27.5
2000 . . .	160.3	838.0	1575.1	275.6	233.7	423.9	26.9
2000 . . .	0.0	18.6	34.7	-	-	-	-

2000 . . . 2001 . . . 2002 . . . 2003 . . . 2004 . . . 2005 . . . 2006 . . . 2007 . . . 2008 . . . 2009 . . . 2010 . . . 2011 . . . 2012 . . . 2013 . . . 2014 . . . 2015 . . . 2016 . . . 2017 . . . 2018 . . . 2019 . . . 2020 . . .

4.2.3. 2000 . . . 2001 . . . 2002 . . . 2003 . . . 2004 . . . 2005 . . . 2006 . . . 2007 . . . 2008 . . . 2009 . . . 2010 . . . 2011 . . . 2012 . . . 2013 . . . 2014 . . . 2015 . . . 2016 . . . 2017 . . . 2018 . . . 2019 . . . 2020 . . .

2001 . . . 2002 . . . 2003 . . . 2004 . . . 2005 . . . 2006 . . . 2007 . . . 2008 . . . 2009 . . . 2010 . . . 2011 . . . 2012 . . . 2013 . . . 2014 . . . 2015 . . . 2016 . . . 2017 . . . 2018 . . . 2019 . . . 2020 . . .

2001 . . . 2002 . . . 2003 . . . 2004 . . . 2005 . . . 2006 . . . 2007 . . . 2008 . . . 2009 . . . 2010 . . . 2011 . . . 2012 . . . 2013 . . . 2014 . . . 2015 . . . 2016 . . . 2017 . . . 2018 . . . 2019 . . . 2020 . . .

	2000 . . .	2001 . . .	2002 . . .
2000 . . .			
2000 . . .	554.29	509.56	19.43
2000 . . .	553.43	518.49	19.38
2000 . . .			
2000 . . .	548.35	497.02	19.12
2000 . . .	552.17	508.79	19.31
2000 . . .			
2000 . . .	544.68	482.59	18.93
2000 . . .	546.03	498.18	18.97
2000 . . .	550.55	508.49	19.22
2000 . . .			
2000 . . .	548.57	494.43	19.00
2000 . . .	547.72	487.33	18.96
2000 . . .			
2000 . . .	556.23	475.69	19.06
2000 . . .	553.61	486.37	19.07
2000 . . .			
2000 . . .			
2000 . . .	555.57	475.46	19.06
2000 . . .	554.81	470.48	18.98
2000 . . .	555.52	470.97	19.04
2000 . . .	555.52	472.91	19.04
2000 . . .	555.75	470.44	19.06
2000 . . .	556.08	475.06	19.06

1 2000 . . . 2001 . . . 2002 . . . 2003 . . . 2004 . . . 2005 . . . 2006 . . . 2007 . . . 2008 . . . 2009 . . . 2010 . . . 2011 . . . 2012 . . . 2013 . . . 2014 . . . 2015 . . . 2016 . . . 2017 . . . 2018 . . . 2019 . . . 2020 . . .

4. 2012 2013 2014

	1 2012 2013	1 2014	1 2015
11	555.56	470.34	19.04
12	555.05	470.02	19.04
13	554.56	471.04	19.00
14	554.67	470.03	19.00
15	554.67	473.80	19.04
18	554.86	471.19	19.08
19	554.86	480.62	19.08
20	555.33	475.53	19.08
21	555.43	475.61	19.04
22	555.03	474.66	19.04
25	555.80	473.99	19.04
26	555.61	478.27	19.04
27	555.11	478.01	19.04
28	554.55	478.13	19.04
29	554.11	471.60	19.04
2012 2013	555.16	473.72	19.04
2014 2015 2016 2017	551.36	495.48	19.11
2018 2019 2020 2021	552.16	482.48	19.02

1 2012 2013 2014 2015 2016 2017 2018 2019 2020 2021